

For Research Use Only

# CoraLite® Plus 488-conjugated ERK1/2 Monoclonal antibody



Catalog Number: **CL488-67170**

## Basic Information

<b>Catalog Number:</b> CL488-67170	<b>GenBank Accession Number:</b> NM_002746	<b>Purification Method:</b> Protein A purification
<b>Size:</b> 100ul , Concentration: 1000 µg/ml by Nanodrop;	<b>GeneID (NCBI):</b> 5595	<b>CloneNo.:</b> 1A3D3
<b>Source:</b> Mouse	<b>Full Name:</b> mitogen-activated protein kinase 3	<b>Excitation/Emission maxima wavelengths:</b> 488 nm / 515 nm
<b>Isotype:</b> IgG2a	<b>Calculated MW:</b> 38-43 kDa	
	<b>Observed MW:</b> 38-44 kDa	

## Applications

**Tested Applications:**  
FC (Intra)

**Species Specificity:**  
Human, Mouse, Rat

## Background Information

ERK1 and ERK2 belongs to the protein kinase superfamily. It is involved in both the initiation and regulation of meiosis, mitosis, and postmitotic functions in differentiated cells by phosphorylating a number of transcription factors such as ELK-1. ERK1/2 catalized the reaction: ATP + a protein = ADP + a phosphoprotein. It is activated by tyrosine phosphorylation in response to INS and NGF. This antibody can recognize both ERK1 and ERK2 with the molecular mass of 38-44 kDa.

## Storage

**Storage:**  
Store at -20°C. Avoid exposure to light.

**Storage Buffer:**  
PBS with 50% Glycerol, 0.05% Proclin300, 0.5% BSA, pH 7.3.

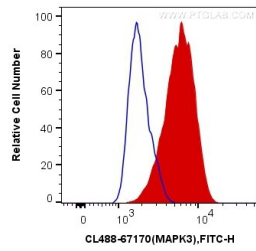
Aliquoting is unnecessary for -20°C storage

**\*\*\* 20ul sizes contain 0.1% BSA**

For technical support and original validation data for this product please contact:  
T: 1 (888) 4PTGLAB (1-888-478-4522) (toll free in USA), or 1(312) 455-8498 (outside USA)      E: [proteintech@ptglab.com](mailto:proteintech@ptglab.com)  
W: [ptglab.com](http://ptglab.com)

**This product is exclusively available under Proteintech Group brand and is not available to purchase from any other manufacturer.**

## Selected Validation Data



1X10<sup>6</sup> HeLa cells were intracellularly stained with 0.4 ug CoralLite® Plus 488 Anti-Human ERK1/2 (CL488-67170, Clone:1A3D3) (red), or 0.4 ug Mouse IgG2a Isotype Control (CL488-66360-2, Clone: K11A1B2A2) (blue). Cells were fixed with 4% PFA and permeabilized with Flow Cytometry Perm Buffer (PF00011-C).