

For Research Use Only

CoraLite® Plus 488-conjugated UBE1 Monoclonal antibody



Catalog Number:CL488-67198

Basic Information

Catalog Number: CL488-67198	GenBank Accession Number: BC013041	Purification Method: Protein A purification
Size: 100ul	GeneID (NCBI): 7317	CloneNo.: 1H7E8
Source: Mouse	Full Name: ubiquitin-like modifier activating enzyme 1	Recommended Dilutions: WB 1:500-1:2000
Isotype: IgG2a	Calculated MW: 1058 aa, 118 kDa	Excitation/Emission maxima wavelengths: 493 nm / 522 nm
Immunogen Catalog Number: AG8920	Observed MW: 114-118 kDa	

Applications

Tested Applications: WB	Positive Controls: WB : HEK-293 cells, NIH/3T3 cells
Species Specificity: Human, mouse, rat	

Background Information

Storage

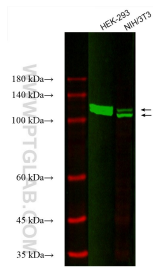
Storage:
Store at -20°C. Avoid exposure to light. Stable for one year after shipment.
Storage Buffer:
PBS with 50% Glycerol, 0.05% Proclin300, 0.5% BSA, pH 7.3.
Aliquoting is unnecessary for -20°C storage

*** 20ul sizes contain 0.1% BSA

For technical support and original validation data for this product please contact:
T: 1 (888) 4PTGLAB (1-888-478-4522) (toll free in USA), or 1(312) 455-8498 (outside USA)
E: proteintech@ptglab.com
W: ptglab.com

This product is exclusively available under Proteintech Group brand and is not available to purchase from any other manufacturer.

Selected Validation Data



Various lysates were subjected to SDS PAGE followed by western blot with CL488-67198 (UBE1 antibody) at dilution of 1:1000 incubated at room temperature for 1.5 hours.