

For Research Use Only

CoraLite® Plus 488-conjugated PEPD Monoclonal antibody



Catalog Number:CL488-67202

Basic Information

Catalog Number: CL488-67202	GenBank Accession Number: BC015027	Purification Method: Protein G purification
Size: 100ul , Concentration: 1000 µg/ml by Nanodrop;	GeneID (NCBI): 5184	CloneNo.: 1H2A1
Source: Mouse	Full Name: peptidase D	Recommended Dilutions: IF 1:50-1:500
Isotype: IgG1	Calculated MW: 493 aa, 55 kDa	Excitation/Emission maxima wavelengths: 488 nm / 515 nm
Immunogen Catalog Number: AG28713	Observed MW: 55 kDa	

Applications

Tested Applications: IF	Positive Controls: IF : A549 cells,
Species Specificity: Human	

Background Information

PEPD, also named as PRD, Prolidase, X-Pro dipeptidase, Imidodipeptidase, Peptidase D and Proline dipeptidase, belongs to the peptidase M24B family and Eukaryotic-type prolidase subfamily. PEPD splits dipeptides with a prolyl or hydroxyprolyl residue in the C-terminal position. It plays an important role in collagen metabolism because the high level of iminoacids in collagen. Defects in PEPD are a cause of prolidase deficiency (PD). PEPD is considered as the most promising candidate genes for altering AAA risk, based on gene function, association evidence, gene expression, and protein expression.(PMID:21247474)

Storage

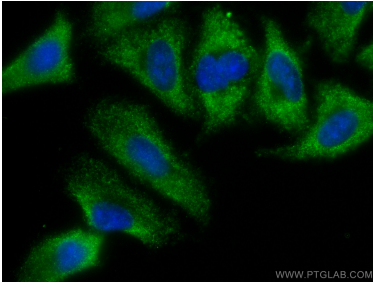
Storage:
Store at -20°C. Avoid exposure to light.
Storage Buffer:
PBS with 50% Glycerol, 0.05% Proclin300, 0.5% BSA, pH 7.3.
Aliquoting is unnecessary for -20°C storage

*** 20ul sizes contain 0.1% BSA

For technical support and original validation data for this product please contact:
T: 1 (888) 4PTGLAB (1-888-478-4522) (toll free in USA), or 1(312) 455-8498 (outside USA)
E: proteintech@ptglab.com
W: ptglab.com

This product is exclusively available under Proteintech Group brand and is not available to purchase from any other manufacturer.

Selected Validation Data



Immunofluorescent analysis of (-20°C Ethanol) fixed A549 cells using Coralite® Plus 488 PEPD antibody (CL488-67202, Clone: 1H2A1) at dilution of 1:200. DAPI (blue).