

For Research Use Only

# CoraLite® Plus 488-conjugated GCK Monoclonal antibody

Catalog Number: CL488-67216



## Basic Information

<b>Catalog Number:</b> CL488-67216	<b>GenBank Accession Number:</b> BC001890	<b>Purification Method:</b> Protein G purification
<b>Size:</b> 100ul , Concentration: 1000 ug/ml by Nanodrop;	<b>GeneID (NCBI):</b> 2645	<b>CloneNo.:</b> 1C3A3
<b>Source:</b> Mouse	<b>UNIPROT ID:</b> P35557	<b>Recommended Dilutions:</b> IF-P 1:50-1:500
<b>Isotype:</b> IgG1	<b>Full Name:</b> glucokinase (hexokinase 4)	<b>Excitation/Emission maxima wavelengths:</b> 493 nm / 522 nm
<b>Immunogen Catalog Number:</b> AG8116	<b>Calculated MW:</b> 52 kDa	
	<b>Observed MW:</b> 52 kDa	

## Applications

<b>Tested Applications:</b> IF-P	<b>Positive Controls:</b> IF-P : human liver cancer tissue,
<b>Species Specificity:</b> Human, Mouse, Rat, Pig	

## Background Information

Glucokinase (GCK) is a structurally and functionally unique member of hexokinase family. It is expressed only in mammalian liver and pancreatic islet beta cells. Because of its unique functional characteristics, the enzyme plays an important regulatory role in glucose metabolism. The rate of glucose metabolism in liver and pancreas is a function of the activity of the enzyme (PMID:1740341). Moreover, GCK has been found to have relationship with diabetes. Defects in GCK are the cause of maturity-onset diabetes of the young type 2 (MODY2) and familial hyperinsulinemic hypoglycemia type 3 (HHF3). It has 3 isoforms produced by alternative splicing with the same molecular mass of 52 kDa.

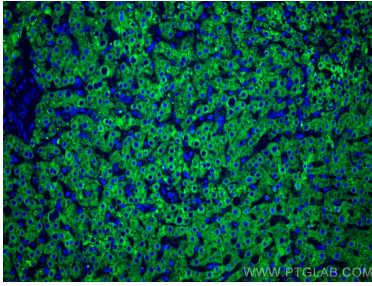
## Storage

**Storage:**  
Store at -20°C. Avoid exposure to light. Stable for one year after shipment.  
**Storage Buffer:**  
PBS with 50% Glycerol, 0.05% Proclin300, 0.5% BSA, pH 7.3.  
Aliquoting is unnecessary for -20°C storage

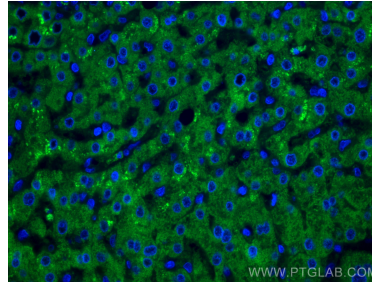
For technical support and original validation data for this product please contact:  
T: 1 (888) 4PTGLAB (1-888-478-4522) (toll free in USA), or 1(312) 455-8498 (outside USA)  
E: [proteintech@ptglab.com](mailto:proteintech@ptglab.com)  
W: [ptglab.com](http://ptglab.com)

This product is exclusively available under Proteintech Group brand and is not available to purchase from any other manufacturer.

## Selected Validation Data



Immunofluorescent analysis of (4% PFA) fixed human liver cancer tissue using CoraLite® Plus 488 GCK antibody (CL488-67216, Clone: 1C3A3 ) at dilution of 1:200.



Immunofluorescent analysis of (4% PFA) fixed human liver cancer tissue using CoraLite® Plus 488 GCK antibody (CL488-67216, Clone: 1C3A3 ) at dilution of 1:200.