

For Research Use Only



CoraLite® Plus 488-conjugated SERCA2,ATP2A2 Monoclonal antibody

Catalog Number:CL488-67248

Basic Information

Catalog Number: CL488-67248	GenBank Accession Number: BC035588	Purification Method: Protein G purification
Size: 100ul , Concentration: 1000 µg/ml by Nanodrop;	GeneID (NCBI): 488	CloneNo.: 1F11A11
Source: Mouse	Full Name: ATPase, Ca++ transporting, cardiac muscle, slow twitch 2	Excitation/Emission maxima wavelengths: 488 nm / 515 nm
Isotype: IgG1	Calculated MW: 1042 aa, 115 kDa	
Immunogen Catalog Number: AG5052	Observed MW: 120 kDa	

Applications

Tested Applications:
FC (Intra)

Species Specificity:
Human, Mouse, Rat

Background Information

ATP2A2, also known as SERCA2 (Sarco/endoplasmic reticulum-type calcium transport ATPase 2), is a 110 kDa magnesium-dependent enzyme catalyzing the hydrolysis of ATP coupled with the translocation of calcium from the cytosol to the sarcoplasmic reticulum lumen. Human SERCA2 gene gives rise to several alternatively spliced isoforms: SERCA2a, SERCA2b and SERCA2c. SERCA2a and SERCA2c are mainly expressed in cardiac muscle, while SERCA2b is ubiquitously expressed in all cell types.

Storage

Storage:
Store at -20°C. Avoid exposure to light. Stable for one year after shipment.

Storage Buffer:
PBS with 50% Glycerol, 0.05% Proclin300, 0.5% BSA, pH 7.3.

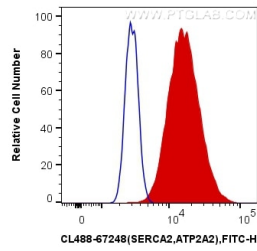
Aliquoting is unnecessary for -20°C storage

*** 20ul sizes contain 0.1% BSA

For technical support and original validation data for this product please contact:
T: 1 (888) 4PTGLAB (1-888-478-4522) (toll free in USA), or 1(312) 455-8498 (outside USA)
E: proteintech@ptglab.com
W: ptglab.com

This product is exclusively available under Proteintech Group brand and is not available to purchase from any other manufacturer.

Selected Validation Data



1×10^6 HeLa cells were intracellularly stained with 0.4 μg Coralite® Plus 488 Anti-Human SERCA2,ATP2A2 (CL488-67248, Clone:1F11A11) (red), or 0.4 μg x. Cells were fixed with 4% PFA and permeabilized with Flow Cytometry Perm Buffer (PF00011-C).