

For Research Use Only

CoraLite® Plus 488-conjugated CYP2E1-Specific Monoclonal antibody



Catalog Number: **CL488-67263**

Basic Information

Catalog Number: CL488-67263	GenBank Accession Number: NM_000773	Purification Method: Protein A purification
Size: 100ul , Concentration: 1000 µg/ml by Nanodrop;	GeneID (NCBI): 1571	CloneNo.: 1F12G7
Source: Mouse	Full Name: cytochrome P450, family 2, subfamily 1F E, polypeptide 1	Recommended Dilutions: 1:50-1:500
Isotype: IgG2b	Calculated MW: 57 kDa	Excitation/Emission maxima wavelengths: 493 nm / 522 nm
	Observed MW: 50-57 kDa	

Applications

Tested Applications:

FC (Intra), IF

Species Specificity:

mouse, rat, pig, human

Positive Controls:

IF : mouse liver tissue,

Background Information

CYP2E1, also named as CYP11E1, 4-nitrophenol 2-hydroxylase, P450-J and CYP2E, belongs to the cytochrome P450 family. CYP2E1 metabolizes several precarcinogens, drugs, and solvents to reactive metabolites. It inactivates a number of drugs and xenobiotics and also bioactivates many xenobiotic substrates to their hepatotoxic or carcinogenic forms. CYP2E1 catalyze the reaction: 4-nitrophenol + NADPH + O₂ = 4-nitrocatechol + NADP⁺ + H₂O. CYP2E1 can be detected as 50-57 kDa (full-length) and ~40 kDa (N-terminal signal peptide cleaved) (PMID: 21130154). The antibody is specific to CYP2E1.

Storage

Storage:

Store at -20°C. Avoid exposure to light. Stable for one year after shipment.

Storage Buffer:

PBS with 50% Glycerol, 0.05% Proclin300, 0.5% BSA, pH 7.3.

Aliquoting is unnecessary for -20°C storage

*** 20ul sizes contain 0.1% BSA

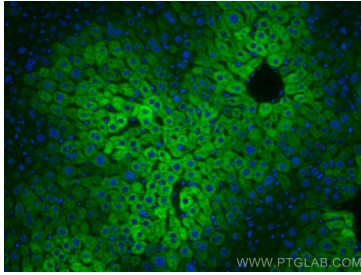
For technical support and original validation data for this product please contact:

T: 1 (888) 4PTGLAB (1-888-478-4522) (toll free
in USA), or 1(312) 455-8498 (outside USA)

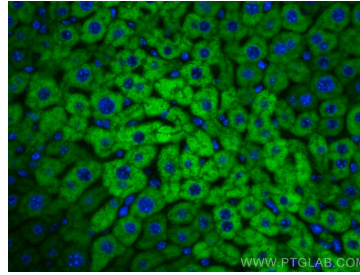
E: proteintech@ptglab.com
W: ptglab.com

This product is exclusively available under Proteintech Group brand and is not available to purchase from any other manufacturer.

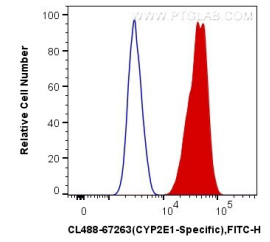
Selected Validation Data



Immunofluorescent analysis of (4% PFA) fixed mouse liver tissue using CoralLite® Plus 488 CYP2E1-Specific antibody (CL488-67263, Clone: 1F12G7) at dilution of 1:200.



Immunofluorescent analysis of (4% PFA) fixed mouse liver tissue using CoralLite® Plus 488 CYP2E1-Specific antibody (CL488-67263, Clone: 1F12G7) at dilution of 1:200.



1×10^6 HeLa cells were intracellularly stained with 0.4 μ g CoralLite® Plus 488 Anti-Human CYP2E1-Specific (CL488-67263, Clone: 1F12G7) (red), or 0.4 μ g Mouse IgG2b Isotype Control (CL488-66360-3, Clone: K11B8C4B5) (blue). Cells were fixed with 4% PFA and permeabilized with Flow Cytometry Perm Buffer (PF00011-C).