

For Research Use Only

CoraLite® Plus 488-conjugated CD5 Monoclonal antibody



Catalog Number: **CL488-67278**

Basic Information

Catalog Number: CL488-67278	GenBank Accession Number: BC027901	Purification Method: Protein A purification
Size: 100ul , Concentration: 1000 µg/ml by Nanodrop;	GeneID (NCBI): 921	CloneNo.: 4D12C10
Source: Mouse	Full Name: CD5 molecule	Recommended Dilutions: IF 1:50-1:500
Isotype: IgG2b	Calculated MW: 495 aa, 55 kDa	Excitation/Emission maxima wavelengths: 488 nm / 515 nm
Immunogen Catalog Number: AG11065		

Applications

Tested Applications: IF	Positive Controls: IF : human tonsillitis tissue,
Species Specificity: Human	

Background Information

CD5 is a type I transmembrane glycoprotein of the scavenger receptor cysteine-rich family (PMID: 12403363). CD5 is expressed on a majority of thymocytes, mature T cells, B cell subsets, and peripheral blood dendritic cells (PMID: 9858516; 6156984; 10379049; 1384337). CD5 may act as a receptor in regulating T-cell proliferation. It functions as a negative regulator of TCR signaling during thymocyte development (PMID: 7542801).

Storage

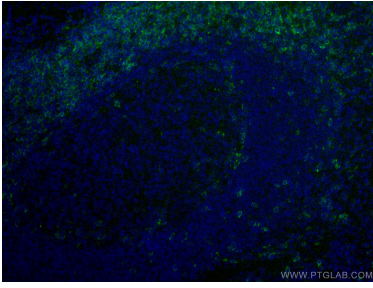
Storage:
Store at -20°C. Avoid exposure to light.
Storage Buffer:
PBS with 50% Glycerol, 0.05% Proclin300, 0.5% BSA, pH 7.3.
Aliquoting is unnecessary for -20°C storage

*** 20ul sizes contain 0.1% BSA

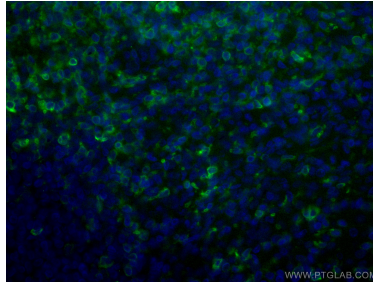
For technical support and original validation data for this product please contact:
T: 1 (888) 4PTGLAB (1-888-478-4522) (toll free in USA), or 1(312) 455-8498 (outside USA)
E: proteintech@ptglab.com
W: ptglab.com

This product is exclusively available under Proteintech Group brand and is not available to purchase from any other manufacturer.

Selected Validation Data



Immunofluorescent analysis of (4% PFA) fixed human tonsillitis tissue using CoraLite® Plus 488 CD5 antibody (CL488-67278, Clone: 4D12C10) at dilution of 1:200.



Immunofluorescent analysis of (4% PFA) fixed human tonsillitis tissue using CoraLite® Plus 488 CD5 antibody (CL488-67278, Clone: 4D12C10) at dilution of 1:200.