

For Research Use Only

# CoraLite® Plus 488-conjugated Ins1 Monoclonal antibody



Catalog Number:CL488-67284

## Basic Information

<b>Catalog Number:</b> CL488-67284	<b>GenBank Accession Number:</b> NM_019129.3	<b>Purification Method:</b> Protein A purification
<b>Size:</b> 100ul , Concentration: 1000 µg/ml by Nanodrop;	<b>GeneID (NCBI):</b> 24505	<b>CloneNo.:</b> 3A11C1
<b>Source:</b> Mouse	<b>Full Name:</b> insulin 1	<b>Recommended Dilutions:</b> IF 1:150-1:600
<b>Isotype:</b> IgG2a	<b>Calculated MW:</b> 12 kDa	<b>Excitation/Emission maxima wavelengths:</b> 488 nm / 515 nm
<b>Immunogen Catalog Number:</b> AG28809		

## Applications

<b>Tested Applications:</b> IF	<b>Positive Controls:</b> IF : rat pancreas tissue, mouse pancreas tissue
<b>Species Specificity:</b> Rat, mouse	

## Background Information

### Storage

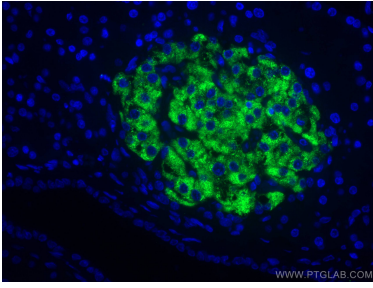
**Storage:**  
Store at -20°C. Avoid exposure to light. Stable for one year after shipment.  
**Storage Buffer:**  
PBS with 50% Glycerol, 0.05% Proclin300, 0.5% BSA, pH 7.3.  
Aliquoting is unnecessary for -20°C storage

\*\*\* 20ul sizes contain 0.1% BSA

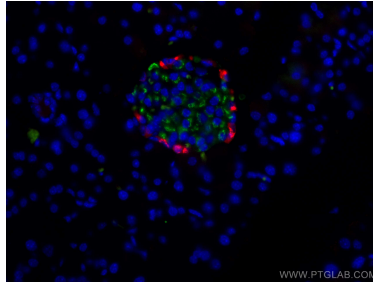
For technical support and original validation data for this product please contact:  
T: 1 (888) 4PTGLAB (1-888-478-4522) (toll free in USA), or 1(312) 455-8498 (outside USA)      E: proteintech@ptglab.com  
W: ptglab.com

This product is exclusively available under Proteintech Group brand and is not available to purchase from any other manufacturer.

## Selected Validation Data



Immunofluorescent analysis of (4% PFA) fixed rat pancreas tissue using CoraLite® Plus 488-conjugated Ins1 antibody (CL488-67284, Clone: 3A11C1) at dilution of 1:300.



Immunofluorescent analysis of (4% PFA) fixed mouse pancreas tissue using CoraLite® Plus 488 Ins1 antibody (CL488-67284, Clone: 3A11C1) at dilution of 1:200, CoraLite® 594 Glucagon antibody (CL594-67286, Clone: 2A8G1, red).