

For Research Use Only

CoraLite® Plus 488-conjugated Glucagon Monoclonal antibody

Catalog Number: CL488-67286

1 Publications



Basic Information

Catalog Number:

CL488-67286

Size:

100ul, Concentration: 1000 ug/ml by Nanodrop;

Source:

Mouse

Isotype:

IgG1

Immunogen Catalog Number:

AG10629

GenBank Accession Number:

BC005278

GeneID (NCBI):

2641

UNIPROT ID:

P01275

Full Name:

glucagon

Calculated MW:

180 aa, 21 kDa

Purification Method:

Protein G purification

CloneNo.:

2A8G1

Recommended Dilutions:

IF-P 1:200-1:800

Excitation/Emission maxima wavelengths:

493 nm / 522 nm

Applications

Tested Applications:

IF-P

Cited Applications:

IF

Species Specificity:

Human, mouse

Cited Species:

mouse

Positive Controls:

IF-P: mouse pancreas tissue,

Background Information

Glucagon is a 29-amino acid peptide hormone secreted from the pancreatic alpha cells with a powerful stimulatory effect on hepatic glucose production acting to increase plasma glucose levels. Glucagon is best known as the counter-regulatory hormone to INS, and normal glucose homeostasis depends largely on the balanced secretion of INS and glucagon from the pancreatic beta and alpha cells, respectively. The regulation of glucose metabolism by glucagon is mediated by its direct action on the peripheral tissues such as the liver and also by the brain. Glucagon is also released postprandially in a transient manner, which was shown to be involved in inhibition of food intake via reduction of meal size.

Notable Publications

Author	Pubmed ID	Journal	Application
Althea N Walldhart	37168572	iScience	IF

Storage

Storage:

Store at -20°C. Avoid exposure to light. Stable for one year after shipment.

Storage Buffer:

PBS with 50% Glycerol, 0.05% Proclin300, 0.5% BSA, pH 7.3.

Aliquoting is unnecessary for -20°C storage

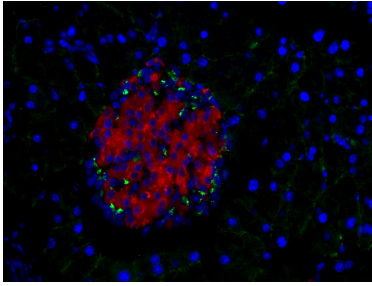
For technical support and original validation data for this product please contact:

T: 1 (888) 4PTGLAB (1-888-478-4522) (toll free in USA), or 1(312) 455-8498 (outside USA)

E: proteintech@ptglab.com
W: ptglab.com

This product is exclusively available under Proteintech Group brand and is not available to purchase from any other manufacturer.

Selected Validation Data



Immunofluorescent analysis of (4% PFA) fixed mouse pancreas tissue using the CoraLite® Plus 488-conjugated version of this antibody, CL488-67286 (Glucagon antibody) and CL594-66198 (INS antibody), at dilution of 1:400. The B cells of the islets of Langerhans was labelled in red with CL594-66198(INS antibody).