

For Research Use Only

# CoraLite® Plus 488-conjugated Collagen Type I Monoclonal antibody

Catalog Number: CL488-67288

1 Publications



## Basic Information

Catalog Number:

CL488-67288

Size:

100ul, Concentration: 1000 ug/ml by Nanodrop;

Source:

Mouse

Isotype:

IgG1

GenBank Accession Number:

NM\_000088

GeneID (NCBI):

1277

UNIPROT ID:

P02452

Full Name:

collagen, type I, alpha 1

Calculated MW:

139 kDa

Observed MW:

120-130 kDa

Purification Method:

Protein G purification

CloneNo.:

1E9A7

Recommended Dilutions:

IF-P 1:50-1:500

Excitation/Emission maxima wavelengths:

493 nm / 522 nm

## Applications

Tested Applications:

IF-P

Cited Applications:

IF

Species Specificity:

human, mouse, pig

Cited Species:

human

Positive Controls:

IF-P: human colon cancer tissue, mouse skin tissue

## Background Information

Type I collagen, the major structural component of connective tissues such as skin, tendon and bone, is the most abundant and widely expressed collagen in humans (PMID: 7620364; 8645190; 9016532). Type I collagen is a heterotrimer comprising one alpha 2(I) and two alpha 1(I) chains which are encoded by the unlinked loci COL1A2 and COL1A1 respectively. Mutations in COL1A1 are associated with osteogenesis imperfecta types I-IV, Ehlers-Danlos syndrome type VIIA, Ehlers-Danlos syndrome Classical type, Caffey Disease and idiopathic osteoporosis. This antibody raised against a synthesized peptide corresponding to 1206-1218 aa of human pro-alpha 1 chain of type I collagen recognize collagen alpha-1(I) chain.

## Notable Publications

Author	Pubmed ID	Journal	Application
Arun Das	37563850	J Med Virol	IF

## Storage

Storage:

Store at -20°C. Avoid exposure to light. Stable for one year after shipment.

Storage Buffer:

PBS with 50% Glycerol, 0.05% Proclin300, 0.5% BSA, pH 7.3.

Aliquoting is unnecessary for -20°C storage

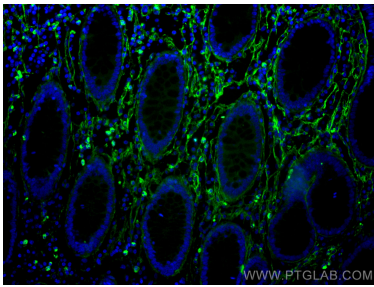
For technical support and original validation data for this product please contact:

T: 1 (888) 4PTGLAB (1-888-478-4522) (toll free in USA), or 1(312) 455-8498 (outside USA)

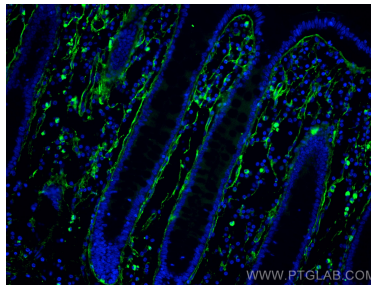
E: [proteintech@ptglab.com](mailto:proteintech@ptglab.com)  
W: [ptglab.com](http://ptglab.com)

This product is exclusively available under Proteintech Group brand and is not available to purchase from any other manufacturer.

## Selected Validation Data



Immunofluorescent analysis of (4% PFA) fixed human colon cancer tissue using CoraLite® Plus 488 Collagen Type I antibody (CL488-67288, Clone: 1E9A7 ) at dilution of 1:200.



Immunofluorescent analysis of (4% PFA) fixed human colon cancer tissue using CoraLite® Plus 488 Collagen Type I antibody (CL488-67288, Clone: 1E9A7 ) at dilution of 1:200.



Immunofluorescent analysis of (4% PFA) fixed paraffin-embedded mouse skin tissue using CoraLite® Plus 488 Collagen Type I antibody (CL488-67288, Clone: 1E9A7 ) at dilution of 1:200. Heat mediated antigen retrieval with Tris-EDTA buffer (pH 9.0).