

For Research Use Only

CoraLite® Plus 488-conjugated MYH1 Monoclonal antibody

Catalog Number: CL488-67299



Basic Information

| | | |
|--|--|---|
| Catalog Number: CL488-67299 | GenBank Accession Number: BC114545 | Purification Method: Protein A purification |
| Size: 100ul , Concentration: 1000 ug/ml by Nanodrop; | GeneID (NCBI): 4619 | CloneNo.: 1G10H9 |
| Source: Mouse | UNIPROT ID: P12882 | Recommended Dilutions: IF-P 1:50-1:500 |
| Isotype: IgG2a | Full Name: myosin, heavy chain 1, skeletal muscle, adult | Excitation/Emission maxima wavelengths: 493 nm / 522 nm |
| Immunogen Catalog Number: AG17129 | Calculated MW: 1939 aa, 223 kDa | |
| | Observed MW: 220 kDa | |

Applications

| | |
|--|---|
| Tested Applications: IF-P | Positive Controls: IF-P : mouse skeletal muscle tissue, |
| Species Specificity: Human, mouse, pig | |

Background Information

MYH1 (MyHC-2x) encodes the IIX isoform of myosin heavy chain (MyHC). Myosin is a large, ubiquitous, motor protein that generates force through its interaction with actin, thus involving it in a number of cellular processes including cytokinesis, karyokinesis, cell migration, and muscle contraction. Muscle fibers can be divided as type 1 (slow) and type 2 (fast). MYH1 belongs to type 2.

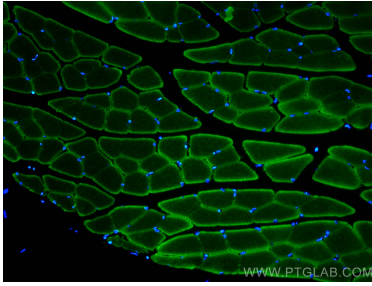
Storage

Storage:
Store at -20°C. Avoid exposure to light. Stable for one year after shipment.
Storage Buffer:
PBS with 50% Glycerol, 0.05% Proclin300, 0.5% BSA, pH 7.3.
Aliquoting is unnecessary for -20°C storage

For technical support and original validation data for this product please contact:
T: 1 (888) 4PTGLAB (1-888-478-4522) (toll free in USA), or 1(312) 455-8498 (outside USA)
E: proteintech@ptglab.com
W: ptglab.com

This product is exclusively available under Proteintech Group brand and is not available to purchase from any other manufacturer.

Selected Validation Data



Immunofluorescent analysis of (4% PFA) fixed mouse skeletal muscle tissue using CoraLite® Plus 488 MYH1 antibody (CL488-67299, Clone: 1G10H9) at dilution of 1:200.