

For Research Use Only

CoraLite® Plus 488-conjugated USP8 Monoclonal antibody



Catalog Number: **CL488-67321**

Basic Information

Catalog Number: CL488-67321	GenBank Accession Number: BC110590	Purification Method: Protein G purification
Size: 100ul , Concentration: 1000 µg/ml by Nanodrop;	GeneID (NCBI): 9101	CloneNo.: 1E12E3
Source: Mouse	Full Name: ubiquitin specific peptidase 8	Recommended Dilutions: IF 1:50-1:500
Isotype: IgG1	Calculated MW: 1118 aa, 128 kDa	Excitation/Emission maxima wavelengths: 493 nm / 522 nm
Immunogen Catalog Number: AG27104	Observed MW: 128 kDa	

Applications

Tested Applications: FC, IF	Positive Controls: IF : HeLa cells,
Species Specificity: Human, Mouse	

Background Information

Storage

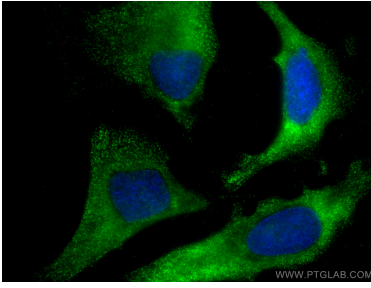
Storage:
Store at -20°C. Avoid exposure to light. Stable for one year after shipment.
Storage Buffer:
PBS with 50% Glycerol, 0.05% Proclin300, 0.5% BSA, pH 7.3.
Aliquoting is unnecessary for -20°C storage

*** 20ul sizes contain 0.1% BSA

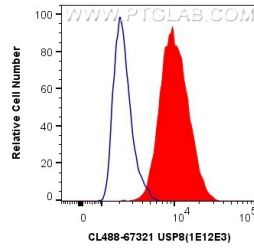
For technical support and original validation data for this product please contact:
T: 1 (888) 4PTGLAB (1-888-478-4522) (toll free in USA), or 1(312) 455-8498 (outside USA)
E: proteintech@ptglab.com
W: ptglab.com

This product is exclusively available under Proteintech Group brand and is not available to purchase from any other manufacturer.

Selected Validation Data



Immunofluorescent analysis of (-20°C Ethanol) fixed HeLa cells using CoraLite® Plus 488 USP8 antibody (CL488-67321, Clone: 1E12E3) at dilution of 1:200.



1X10⁶ HeLa cells were intracellularly stained with 0.8 ug CoraLite® Plus 488 Anti-Human USP8 (CL488-67321, Clone:1E12E3) (red), or 0.8 ug CoraLite® Plus 488 Mouse IgG1 Isotype Control (MOPC-21) (CL488-65124, Clone: MOPC-21) (blue). Cells were fixed with 4% PFA and permeabilized with Flow Cytometry Perm Buffer (PF00011-C).