

For Research Use Only

CoraLite® Plus 488-conjugated MAP2K4 Monoclonal antibody



Catalog Number: CL488-67333

Basic Information

| | | |
|---|---|---|
| Catalog Number: CL488-67333 | GenBank Accession Number: BC036032 | Purification Method: Protein A purification |
| Size: 100ul , Concentration: 1000 µg/ml by Nanodrop; | GeneID (NCBI): 6416 | CloneNo.: 2E4C1 |
| Source: Mouse | Full Name: mitogen-activated protein kinase kinase 4 | Recommended Dilutions: IF 1:50-1:500 |
| Isotype: IgG2b | Calculated MW: 399 aa, 44 kDa | |
| Immunogen Catalog Number: AG11348 | Observed MW: 44-50 kDa | |

Applications

| | |
|---|--|
| Tested Applications: FC (Intra), IF | Positive Controls: IF : HepG2 cells, |
| Species Specificity: Human | |

Background Information

MEK4 is also named as JNKK1, MAP2K4, MKK4, PRKMK4, SEK1, SERK1, SKK1 and belongs to the protein kinase superfamily. MEK4 is a member of the mitogen-activated protein kinase family, originally identified as a kinase involved in the stress-activated protein kinase pathway by directly phosphorylating c-Jun NH 2-terminal kinase. This protein has 2 isoforms produced by alternative splicing.

Storage

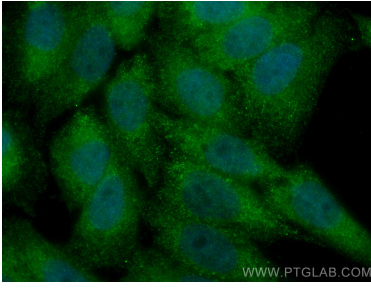
Storage:
Store at -20°C. Avoid exposure to light. Stable for one year after shipment.
Storage Buffer:
PBS with 50% Glycerol, 0.05% Proclin300, 0.5% BSA, pH 7.3.
Aliquoting is unnecessary for -20°C storage

*** 20ul sizes contain 0.1% BSA

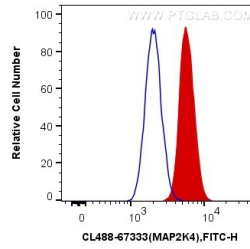
For technical support and original validation data for this product please contact:
T: 1 (888) 4PTGLAB (1-888-478-4522) (toll free in USA), or 1(312) 455-8498 (outside USA)
E: proteintech@ptglab.com
W: ptglab.com

This product is exclusively available under Proteintech Group brand and is not available to purchase from any other manufacturer.

Selected Validation Data



Immunofluorescent analysis of (4% PFA) fixed HepG2 cells using CoraLite® Plus 488 MAP2K4 antibody (CL488-67333, Clone: 2E4C1) at dilution of 1:200.



1X10⁶ HepG2 cells were intracellularly stained with 0.4 ug CoraLite® Plus 488 Anti-Human MAP2K4 (CL488-67333, Clone:2E4C1) (red), or 0.4 ug Mouse IgG2b Isotype Control (CL488-66360-3, Clone: K11B8C4B5) (blue). Cells were fixed with 4% PFA and permeabilized with Flow Cytometry Perm Buffer (PF00011-C).