

For Research Use Only

CoraLite® Plus 488-conjugated ANAPC5 Monoclonal antibody

Catalog Number: CL488-67348



Basic Information

Catalog Number: CL488-67348	GenBank Accession Number: BC001081	Purification Method: Protein G purification
Size: 100ul , Concentration: 1000 ug/ml by Nanodrop;	GeneID (NCBI): 51433	CloneNo.: 2A7G5
Source: Mouse	UNIPROT ID: Q9UJX4	Recommended Dilutions: IF-P 1:50-1:500
Isotype: IgG1	Full Name: anaphase promoting complex subunit 5	Excitation/Emission maxima wavelengths: 493 nm / 522 nm
Immunogen Catalog Number: AG7409	Calculated MW: 85 kDa	
	Observed MW: 85 kDa, 72 kDa	

Applications

Tested Applications: IF-P	Positive Controls: IF-P : human breast cancer tissue,
Species Specificity: Human, Mouse, Rat	

Storage

Storage:
Store at -20°C. Avoid exposure to light. Stable for one year after shipment.

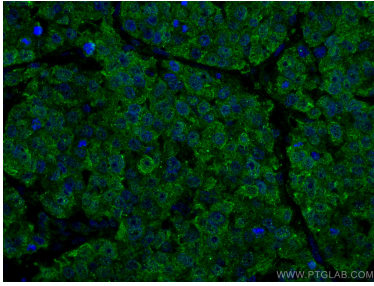
Storage Buffer:
PBS with 50% Glycerol, 0.05% Proclin300, 0.5% BSA, pH 7.3.

Aliquoting is unnecessary for -20°C storage

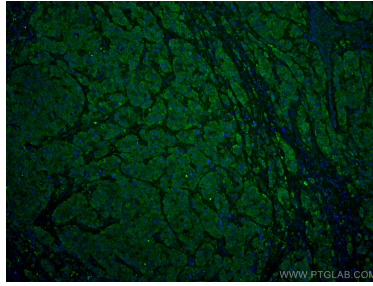
For technical support and original validation data for this product please contact:
T: 1 (888) 4PTGLAB (1-888-478-4522) (toll free in USA), or 1(312) 455-8498 (outside USA)
E: proteintech@ptglab.com
W: ptglab.com

This product is exclusively available under Proteintech Group brand and is not available to purchase from any other manufacturer.

Selected Validation Data



Immunofluorescent analysis of (4% PFA) fixed human breast cancer tissue using CoraLite® Plus 488 ANAPC5 antibody (CL488-67348, Clone: 2A7G5) at dilution of 1:200.



Immunofluorescent analysis of (4% PFA) fixed human breast cancer tissue using CoraLite® Plus 488 ANAPC5 antibody (CL488-67348, Clone: 2A7G5) at dilution of 1:200.