

For Research Use Only

CoraLite® Plus 488-conjugated RALBP1 Monoclonal antibody

Catalog Number: CL488-67359



Basic Information

Catalog Number:

CL488-67359

Size:

100ul , Concentration: 1000 ug/ml by
Nanodrop;

Source:

Mouse

Isotype:

IgG1

Immunogen Catalog Number:

AG28618

GenBank Accession Number:

BC013126

GeneID (NCBI):

10928

UNIPROT ID:

Q15311

Full Name:

ralA binding protein 1

Calculated MW:

655 aa, 76 kDa

Observed MW:

95 kDa

Purification Method:

Protein G purification

CloneNo.:

1B2F5

Recommended Dilutions:

IF/ICC 1:50-1:500

Excitation/Emission maxima
wavelengths:

493 nm / 522 nm

Applications

Tested Applications:

IF/ICC, FC (Intra)

Species Specificity:

human, mouse

Positive Controls:

IF/ICC : A431 cells,

Storage

Storage:

Store at -20°C. Avoid exposure to light. Stable for one year after shipment.

Storage Buffer:

PBS with 50% Glycerol, 0.05% Proclin300, 0.5% BSA, pH 7.3.

Aliquoting is unnecessary for -20°C storage

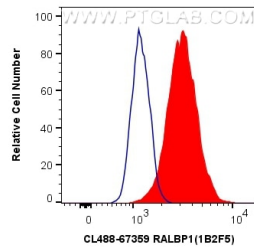
For technical support and original validation data for this product please contact:

T: 1 (888) 4PTGLAB (1-888-478-4522) (toll free
in USA), or 1(312) 455-8498 (outside USA)

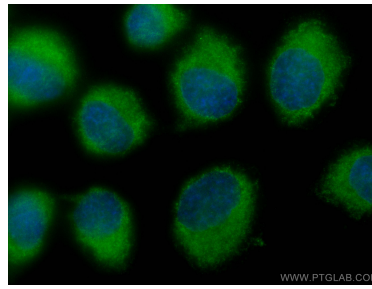
E: proteintech@ptglab.com
W: ptglab.com

This product is exclusively available under Proteintech
Group brand and is not available to purchase from any
other manufacturer.

Selected Validation Data



1×10^6 HEK-293 cells were intracellularly stained with 0.4 μ g CoraLite® Plus 488 Anti-Human RALBP1 (CL488-67359, Clone:1B2F5) (red), or 0.4 μ g Control Antibody. Cells were fixed with 4% PFA and permeabilized with Flow Cytometry Perm Buffer (PF00011-C).



Immunofluorescent analysis of (-20°C Methanol) fixed A431 cells using CoraLite® Plus 488 RALBP1 antibody (CL488-67359, Clone: 1B2F5) at dilution of 1:200.