

For Research Use Only

CoraLite® Plus 488-conjugated FGL1 Monoclonal antibody

Catalog Number: CL488-67391

1 Publications



Basic Information

Catalog Number: CL488-67391	GenBank Accession Number: BC007047	Purification Method: Protein G purification
Size: 100ul , Concentration: 1000 ug/ml by Nanodrop;	GeneID (NCBI): 2267	CloneNo.: 2B11C6
Source: Mouse	UNIPROT ID: Q08830	Recommended Dilutions: IF/ICC 1:50-1:500
Isotype: IgG1	Full Name: fibrinogen-like 1	Excitation/Emission maxima wavelengths: 493 nm / 522 nm
Immunogen Catalog Number: AG8581	Calculated MW: 312 aa, 36 kDa	

Applications

Tested Applications: IF/ICC	Positive Controls: IF/ICC : HepG2 cells,
Cited Applications: IF	
Species Specificity: Human, pig	
Cited Species: human	

Background Information

Fibrinogen-like 1 (FGL1), also termed hepatocyte-derived fibrinogen-related protein 1 (HFREP1) or hepassocin, is a predominantly liver expressed protein that has been implicated as both a hepatoprotectant and a hepatocyte mitogen. FGL1 expression is decreased in hepatocellular carcinoma (HCC), and it may play a role in the development of hepatocellular carcinomas.

Notable Publications

Author	Pubmed ID	Journal	Application
Yue Xu	39893698	Mol Pharm	IF

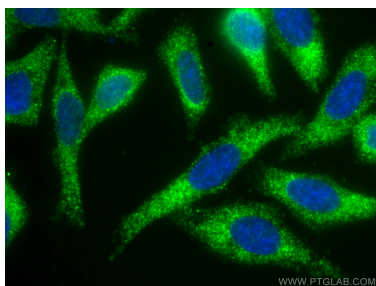
Storage

Storage:
Store at -20°C. Avoid exposure to light. Stable for one year after shipment.
Storage Buffer:
PBS with 50% Glycerol, 0.05% Proclin300, 0.5% BSA, pH 7.3.
Aliquoting is unnecessary for -20°C storage

For technical support and original validation data for this product please contact:
T: 1 (888) 4PTGLAB (1-888-478-4522) (toll free in USA), or 1(312) 455-8498 (outside USA)
E: proteintech@ptglab.com
W: ptglab.com

This product is exclusively available under Proteintech Group brand and is not available to purchase from any other manufacturer.

Selected Validation Data



Immunofluorescent analysis of (-20°C Ethanol) fixed HepG2 cells using CoraLite® Plus 488 FGL1 antibody (CL488-67391, Clone: 2B11C6) at dilution of 1:200.