

For Research Use Only

# CoraLite® Plus 488-conjugated RGS14 Monoclonal antibody

Catalog Number: CL488-67394



## Basic Information

<b>Catalog Number:</b> CL488-67394	<b>GenBank Accession Number:</b> BC014094	<b>Purification Method:</b> Protein G purification
<b>Size:</b> 100ul , Concentration: 1000 ug/ml by Nanodrop;	<b>GeneID (NCBI):</b> 10636	<b>CloneNo.:</b> 1C1B2
<b>Source:</b> Mouse	<b>UNIPROT ID:</b> O43566	<b>Recommended Dilutions:</b> IF/ICC 1:50-1:500
<b>Isotype:</b> IgG1	<b>Full Name:</b> regulator of G-protein signaling 14	<b>Excitation/Emission maxima wavelengths:</b> 493 nm / 522 nm
<b>Immunogen Catalog Number:</b> AG9477	<b>Calculated MW:</b> 566 aa, 61 kDa	
	<b>Observed MW:</b> 61 kDa	

## Applications

<b>Tested Applications:</b> IF/ICC, FC (Intra)	<b>Positive Controls:</b> IF/ICC : HeLa cells,
<b>Species Specificity:</b> human, mouse, rat	

## Background Information

RGS14, a member of the R12 subfamily of RGS proteins, is highly expressed in the brain and is a natural suppressor of CA2 hippocampal synaptic plasticity and learning and memory. RGS14 was first identified as a complex scaffolding protein with an unconventional domain structure that allows it to interact with various protein binding partners. RGS14 contains one RGS domain, two Raf-like Ras-binding domains (RBDs), and one GoLoco domain. The protein attenuates the signaling activity of G-proteins by binding, through its GoLoco domain, to specific types of activated, GTP-bound G alpha subunits. Acting as a GTPase activating protein (GAP), the protein increases the rate of conversion of the GTP to GDP.

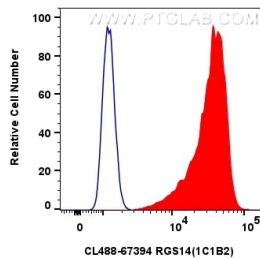
## Storage

**Storage:**  
Store at -20°C. Avoid exposure to light. Stable for one year after shipment.  
**Storage Buffer:**  
PBS with 50% Glycerol, 0.05% Proclin300, 0.5% BSA, pH 7.3.  
Aliquoting is unnecessary for -20°C storage

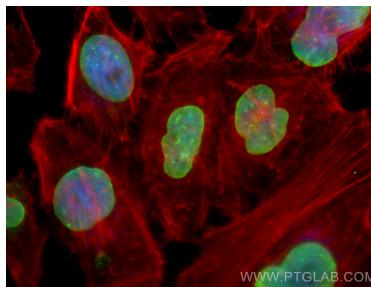
For technical support and original validation data for this product please contact:  
T: 1 (888) 4PTGLAB (1-888-478-4522) (toll free in USA), or 1(312) 455-8498 (outside USA)  
E: [proteintech@ptglab.com](mailto:proteintech@ptglab.com)  
W: [ptglab.com](http://ptglab.com)

This product is exclusively available under Proteintech Group brand and is not available to purchase from any other manufacturer.

## Selected Validation Data



$1 \times 10^6$  HeLa cells were intracellularly stained with 0.4  $\mu$ g CoraLite® Plus 488 Rgs14 Monoclonal Antibody (CL488-67394, Clone: 1C1B2)(red), or 0.4  $\mu$ g CoraLite® Plus 488 Mouse IgG1 Isotype Control (MOPC-21) (CL488-65124, Clone: MOPC-21) (blue). Cells were fixed with 4% PFA and permeabilized with Flow Cytometry Perm Buffer (PF00011-C).



Immunofluorescent analysis of (4% PFA) fixed HeLa cells using CoraLite® Plus 488 RGS14 antibody (CL488-67394, Clone: 1C1B2) at dilution of 1:200, CL594-Phalloidin (red).