

For Research Use Only

CoraLite® Plus 488-conjugated LACTB2 Monoclonal antibody

Catalog Number:CL488-67399



Basic Information

Catalog Number:

CL488-67399

Size:

100ul , Concentration: 1000 ug/ml by Nanodrop;

Source:

Mouse

Isotype:

IgG1

Immunogen Catalog Number:

AG10231

GenBank Accession Number:

BC000878

GeneID (NCBI):

51110

UNIPROT ID:

Q53H82

Full Name:

lactamase, beta 2

Calculated MW:

288 aa, 33 kDa

Observed MW:

33 kDa

Purification Method:

Protein G purification

CloneNo.:

1G6B1

Recommended Dilutions:

IF-P 1:50-1:500

Excitation/Emission maxima wavelengths:

493 nm / 522 nm

Applications

Tested Applications:

IF-P

Species Specificity:

Human, Mouse

Positive Controls:

IF-P : human liver cancer tissue,

Storage

Storage:

Store at -20°C. Avoid exposure to light. Stable for one year after shipment.

Storage Buffer:

PBS with 50% Glycerol, 0.05% Proclin300, 0.5% BSA, pH 7.3.

Aliquoting is unnecessary for -20°C storage

For technical support and original validation data for this product please contact:

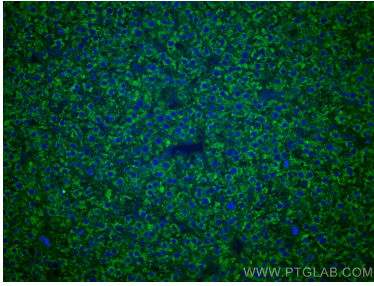
T: 1 (888) 4PTGLAB (1-888-478-4522) (toll free in USA), or 1(312) 455-8498 (outside USA)

E: proteintech@ptglab.com

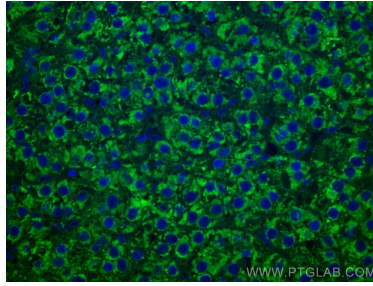
W: ptglab.com

This product is exclusively available under Proteintech Group brand and is not available to purchase from any other manufacturer.

Selected Validation Data



Immunofluorescent analysis of (4% PFA) fixed human liver cancer tissue using CoraLite® Plus 488 LACTB2 antibody (CL488-67399, Clone: 1G6B1) at dilution of 1:200.



Immunofluorescent analysis of (4% PFA) fixed human liver cancer tissue using CoraLite® Plus 488 LACTB2 antibody (CL488-67399, Clone: 1G6B1) at dilution of 1:200.