

For Research Use Only

CoraLite® Plus 488-conjugated CCT5 Monoclonal antibody

Catalog Number: CL488-67400

Featured Product



Basic Information

Catalog Number:

CL488-67400

Size:

100ul , Concentration: 1000 ug/ml by Nanodrop;

Source:

Mouse

Isotype:

IgG1

Immunogen Catalog Number:

AG21421

GenBank Accession Number:

BC035499

GeneID (NCBI):

22948

UNIPROT ID:

P48643

Full Name:

chaperonin containing TCP1, subunit 5 (epsilon)

Calculated MW:

541 aa, 60 kDa

Observed MW:

60 kDa

Purification Method:

Protein G purification

CloneNo.:

1B12E10

Recommended Dilutions:

IF/ICC 1:50-1:500

Excitation/Emission maxima

wavelengths:

493 nm / 522 nm

Applications

Tested Applications:

IF/ICC, FC (Intra)

Species Specificity:

human, mouse, rat

Positive Controls:

IF/ICC : HepG2 cells,

Storage

Storage:

Store at -20°C. Avoid exposure to light. Stable for one year after shipment.

Storage Buffer:

PBS with 50% Glycerol, 0.05% Proclin300, 0.5% BSA, pH 7.3.

Aliquoting is unnecessary for -20°C storage

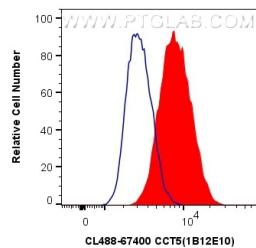
For technical support and original validation data for this product please contact:

T: 1 (888) 4PTGLAB (1-888-478-4522) (toll free in USA), or 1(312) 455-8498 (outside USA)

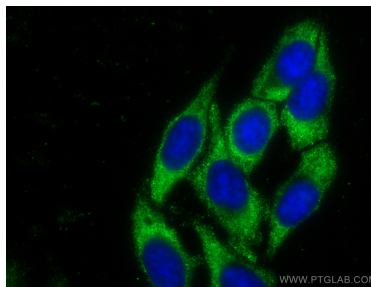
E: proteintech@ptglab.com
W: ptglab.com

This product is exclusively available under Proteintech Group brand and is not available to purchase from any other manufacturer.

Selected Validation Data



1×10^6 HepG2 cells were intracellularly stained with 0.8 μ g CoraLite® Plus 488 Anti-Human CCT5 (CL488-67400, Clone: 1B12E10) (red), or 0.8 μ g CoraLite® Plus 488 Mouse IgG1 Isotype Control (MOPC-21) (CL488-65124, Clone: MOPC-21) (blue). Cells were fixed with 4% PFA and permeabilized with Flow Cytometry Perm Buffer (PF00011-C).



Immunofluorescent analysis of (-20°C Ethanol) fixed HepG2 cells using CoraLite® Plus 488 CCT5 antibody (CL488-67400, Clone: 1B12E10) at dilution of 1:200.