

For Research Use Only

CoraLite® Plus 488-conjugated VEGFR2/KDR Monoclonal antibody



Catalog Number: CL488-67407

Basic Information

Catalog Number: CL488-67407	GenBank Accession Number: BC131822	Purification Method: Protein G purification
Size: 100ul , Concentration: 1000 µg/ml by Nanodrop;	GeneID (NCBI): 3791	CloneNo.: 1G2A8
Source: Mouse	UNIPROT ID: P35968	Excitation/Emission maxima wavelengths: 493 nm / 522 nm
Isotype: IgG1	Full Name: kinase insert domain receptor (a type III receptor tyrosine kinase)	
Immunogen Catalog Number: AG24589	Calculated MW: 1356 aa, 152 kDa	
	Observed MW: 230 kDa	

Applications

Tested Applications:
FC

Species Specificity:
Human

Background Information

KDR, also named as VEGFR-2, FLK1 and CD309, is a receptor for VEGF or VEGFC. KDR which belongs to the protein kinase superfamily, has a tyrosine-protein kinase activity. The VEGF-kinase ligand/receptor signaling system plays a key role in vascular development and regulation of vascular permeability. In case of HIV-1 infection, the interaction with extracellular viral Tat protein seems to enhance angiogenesis in Kaposi's sarcoma lesions. KDR functions as the main mediator of VEGF-induced endothelial proliferation, survival, migration, tubular morphogenesis and sprouting. Mutations of this gene are implicated in infantile capillary hemangiomas.

Storage

Storage:
Store at -20°C. Avoid exposure to light. Stable for one year after shipment.

Storage Buffer:
PBS with 50% Glycerol, 0.05% Proclin300, 0.5% BSA, pH 7.3.

Aliquoting is unnecessary for -20°C storage

*** 20ul sizes contain 0.1% BSA

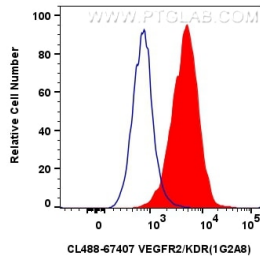
For technical support and original validation data for this product please contact:

T: 1 (888) 4PTGLAB (1-888-478-4522) (toll free
in USA), or 1(312) 455-8498 (outside USA)

E: proteintech@ptglab.com
W: ptglab.com

This product is exclusively available under Proteintech Group brand and is not available to purchase from any other manufacturer.

Selected Validation Data



1x10⁶ HUVEC cells were intracellularly stained with 0.8 ug CoraLite® Plus 488 Anti-Human VEGFR2/KDR (CL488-67407, Clone:1G2A8)(red), or 0.8 ug CoraLite® Plus 488 Mouse IgG1 Isotype Control (MOPC-21) (CL488-65124, Clone: MOPC-21) (blue). Cells were not fixed.