

For Research Use Only

# CoraLite® Plus 488-conjugated CYP2W1 Monoclonal antibody

Catalog Number: CL488-67419

Featured Product



## Basic Information

Catalog Number:

CL488-67419

Size:

100ul, Concentration: 1000 ug/ml by Nanodrop;

Source:

Mouse

Isotype:

IgG1

Immunogen Catalog Number:

AG29982

GenBank Accession Number:

BC025761

GeneID (NCBI):

54905

UNIPROT ID:

Q8TAV3

Full Name:

cytochrome P450, family 2, subfamily W, polypeptide 1

Calculated MW:

54 kDa

Observed MW:

45-54 kDa

Purification Method:

Protein G purification

CloneNo.:

2B10H2

Recommended Dilutions:

IF/ICC 1:50-1:500

Excitation/Emission maxima

wavelengths:

493 nm / 522 nm

## Applications

Tested Applications:

IF/ICC, FC (Intra)

Species Specificity:

human, mouse, rat

Positive Controls:

IF/ICC : HepG2 cells,

## Background Information

Cytochrome P450s have been proposed to be of importance both in carcinogenesis, by activating precarcinogens, and as determinants of cancer chemotherapy, where they participate in activation or inactivation of anti-cancer drugs. CYP2W1 is exclusively expressed in transformed tissue in the adult human, mainly in colon tumors. It is a potential drug target in cancer therapy. CYP2W1 has a molecular weight of 52-54 kDa, and 30/45 kDa of potential isoforms.

## Storage

Storage:

Store at -20°C. Avoid exposure to light. Stable for one year after shipment.

Storage Buffer:

PBS with 50% Glycerol, 0.05% Proclin300, 0.5% BSA, pH 7.3.

Aliquoting is unnecessary for -20°C storage

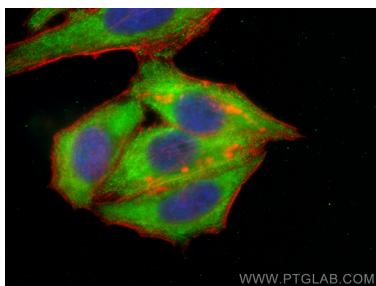
For technical support and original validation data for this product please contact:

T: 1 (888) 4PTGLAB (1-888-478-4522) (toll free in USA), or 1(312) 455-8498 (outside USA)

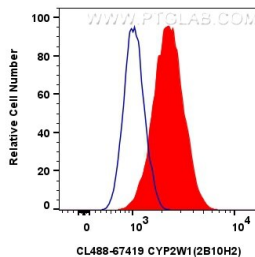
E: [proteintech@ptglab.com](mailto:proteintech@ptglab.com)  
W: [ptglab.com](http://ptglab.com)

This product is exclusively available under Proteintech Group brand and is not available to purchase from any other manufacturer.

## Selected Validation Data



Immunofluorescent analysis of (-20°C Ethanol) fixed HepG2 cells using CoraLite® Plus 488 CYP2W1 antibody (CL488-67419, Clone: 2B10H2 ) at dilution of 1:200, CL594-Phalloidin (red).



1x10<sup>6</sup> HUVEC cells were intracellularly stained with 0.8 ug CoraLite® Plus 488-conjugated CYP2W1 Monoclonal antibody (CL488-67419, Clone:2B10H2)(red), or 0.8 ug CoraLite® Plus 488 Mouse IgG1 Isotype Control (MOPC-21) (CL488-65124, Clone: MOPC-21) (blue). Cells were fixed with 4% PFA and permeabilized with Flow Cytometry Perm Buffer (PF00011-C).