

For Research Use Only

CoraLite® Plus 488-conjugated KLK11 Monoclonal antibody



Catalog Number: **CL488-67427**

Basic Information

Catalog Number: CL488-67427	GenBank Accession Number: BC022068	Purification Method: Protein G purification
Size: 100ul , Concentration: 1000 µg/ml by Nanodrop;	GeneID (NCBI): 11012	CloneNo.: 1E2B4
Source: Mouse	Full Name: kallikrein-related peptidase 11	Recommended Dilutions: IF 1:50-1:500
Isotype: IgG1	Calculated MW: 250 aa, 27 kDa	Excitation/Emission maxima wavelengths: 488 nm / 515 nm
Immunogen Catalog Number: AG29895	Observed MW: 30-40 kDa	

Applications

Tested Applications: IF	Positive Controls: IF : human breast cancer tissue,
Species Specificity: Human, Pig, Rat	

Background Information

KLK11(Kallikrein-11) is also named as PRSS20, TLSP and belongs to the peptidase S1 family and Kallikrein subfamily. It is a multifunctional protease cleaving several substrates for kallikrein and trypsin and involved in normal physiology processes in bronchus. This full length protein has a signal peptide, a propeptide and four glycosylation sites. It has 4 isoforms produced by alternative splicing with the molecular weight of 31 kDa, 27 kDa, 34 kDa and 30 kDa.

Storage

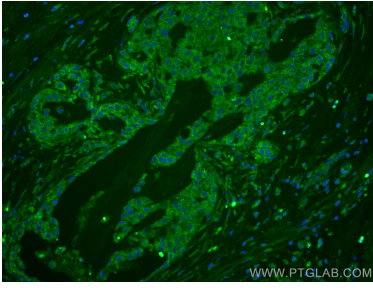
Storage:
Store at -20°C. Avoid exposure to light.
Storage Buffer:
PBS with 50% Glycerol, 0.05% Proclin300, 0.5% BSA, pH 7.3.
Aliquoting is unnecessary for -20°C storage

***** 20ul sizes contain 0.1% BSA**

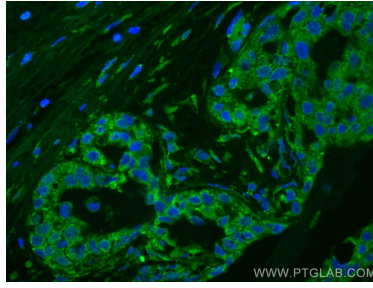
For technical support and original validation data for this product please contact:
T: 1 (888) 4PTGLAB (1-888-478-4522) (toll free in USA), or 1(312) 455-8498 (outside USA)
E: proteintech@ptglab.com
W: ptglab.com

This product is exclusively available under Proteintech Group brand and is not available to purchase from any other manufacturer.

Selected Validation Data



Immunofluorescent analysis of (4% PFA) fixed human breast cancer tissue using CoraLite® Plus 488 KLK11 antibody (CL488-67427, Clone: 1E2B4) at dilution of 1:200.



Immunofluorescent analysis of (4% PFA) fixed human breast cancer tissue using CoraLite® Plus 488 KLK11 antibody (CL488-67427, Clone: 1E2B4) at dilution of 1:200.