

For Research Use Only

CoraLite® Plus 488-conjugated TTPA Monoclonal antibody

Catalog Number:CL488-67431



Basic Information

Catalog Number:

CL488-67431

Size:

100ul , Concentration: 1000 ug/ml by Nanodrop;

Source:

Mouse

Isotype:

IgG2b

Immunogen Catalog Number:

AG13587

GenBank Accession Number:

BC058000

GeneID (NCBI):

7274

UNIPROT ID:

P49638

Full Name:

tocopherol (alpha) transfer protein

Calculated MW:

32 kDa

Observed MW:

32 kDa

Purification Method:

Protein A purification

CloneNo.:

3E7D10

Recommended Dilutions:

IF-P 1:50-1:500

Excitation/Emission maxima wavelengths:

493 nm / 522 nm

Applications

Tested Applications:

IF-P

Species Specificity:

Human, Mouse, Rat, Pig

Positive Controls:

IF-P : human liver cancer tissue,

Storage

Storage:

Store at -20°C. Avoid exposure to light. Stable for one year after shipment.

Storage Buffer:

PBS with 50% Glycerol, 0.05% Proclin300, 0.5% BSA, pH 7.3.

Aliquoting is unnecessary for -20°C storage

For technical support and original validation data for this product please contact:

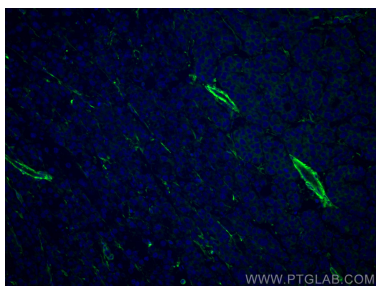
T: 1 (888) 4PTGLAB (1-888-478-4522) (toll free in USA), or 1(312) 455-8498 (outside USA)

E: proteintech@ptglab.com

W: ptglab.com

This product is exclusively available under Proteintech Group brand and is not available to purchase from any other manufacturer.

Selected Validation Data



Immunofluorescent analysis of (4% PFA) fixed human liver cancer tissue using CoraLite® Plus 488 TTPA antibody (CL488-67431, Clone: 3E7D10) at dilution of 1:200.



Immunofluorescent analysis of (4% PFA) fixed human liver cancer tissue using CoraLite® Plus 488 TTPA antibody (CL488-67431, Clone: 3E7D10) at dilution of 1:200.