

For Research Use Only

CoraLite® Plus 488-conjugated CYP20A1 Monoclonal antibody

Catalog Number: CL488-67433



Basic Information

Catalog Number:

CL488-67433

Size:

100ul , Concentration: 1000 ug/ml by
Nanodrop;

Source:

Mouse

Isotype:

IgG1

Immunogen Catalog Number:

AG9715

GenBank Accession Number:

BC020616

GeneID (NCBI):

57404

UNIPROT ID:

Q6UW02

Full Name:

cytochrome P450, family 20,
subfamily A, polypeptide 1

Calculated MW:

462 aa, 52 kDa

Observed MW:

49-52 kDa

Purification Method:

Protein G purification

CloneNo.:

2A9E2

Recommended Dilutions:

IF/ICC 1:200-1:800

Excitation/Emission maxima
wavelengths:

493 nm / 522 nm

Applications

Tested Applications:

IF/ICC, FC (Intra)

Species Specificity:

human, mouse, rat

Positive Controls:

IF/ICC : HeLa cells,

Storage

Storage:

Store at -20°C. Avoid exposure to light. Stable for one year after shipment.

Storage Buffer:

PBS with 50% Glycerol, 0.05% Proclin300, 0.5% BSA, pH 7.3.

Aliquoting is unnecessary for -20°C storage

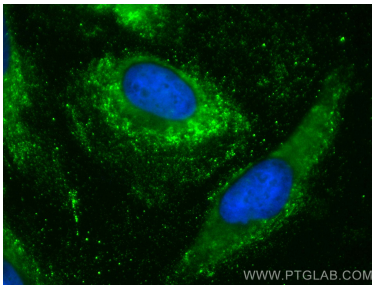
For technical support and original validation data for this product please contact:

T: 1 (888) 4PTGLAB (1-888-478-4522) (toll free
in USA), or 1(312) 455-8498 (outside USA)

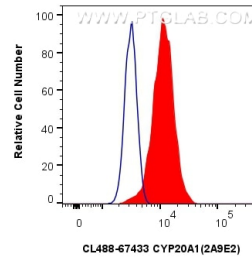
E: proteintech@ptglab.com
W: ptglab.com

This product is exclusively available under Proteintech
Group brand and is not available to purchase from any
other manufacturer.

Selected Validation Data



Immunofluorescent analysis of (-20°C Methanol) fixed HeLa cells using CoraLite® Plus 488 CYP20A1 antibody (CL488-67433, Clone: 2A9E2) at dilution of 1:200.



1x10⁶ HeLa cells were intracellularly stained with 0.4 ug CoraLite® Plus 488-conjugated CYP20A1 Monoclonal antibody (CL488-67433, Clone:2A9E2) (red), or 0.4 ug CoraLite® Plus 488 Mouse IgG1 Isotype Control (1F8D3) (CL488-66360-1, Clone: 1F8D3) (blue). Cells were fixed with 4% PFA and permeabilized with Flow Cytometry Perm Buffer (PF00011-C).