

For Research Use Only

CoraLite® Plus 488-conjugated MTH1 Monoclonal antibody

Catalog Number: **CL488-67443**



Basic Information

Catalog Number: CL488-67443	GenBank Accession Number: BC014618	Purification Method: Protein G purification
Size: 100ul , Concentration: 1000 ug/ml by Nanodrop;	GeneID (NCBI): 4521	CloneNo.: 2D7G4
Source: Mouse	UNIPROT ID: P36639	Recommended Dilutions: IF/ICC 1:50-1:500
Isotype: IgG1	Full Name: nudix (nucleoside diphosphate linked moiety X)-type motif 1	Excitation/Emission maxima wavelengths: 493 nm / 522 nm
Immunogen Catalog Number: AG9802	Calculated MW: 179aa,20 kDa; 197aa,23 kDa	
	Observed MW: 19 kDa	

Applications

Tested Applications: IF/ICC, FC (Intra)	Positive Controls: IF/ICC : HepG2 cells,
Species Specificity: human	

Background Information

MTH1, also known as NUDT1 or 8-Oxo-dGTPase, is an important repair enzyme that prevents oxidative stress-induced DNA damage through hydrolyzing mutagenic 8-oxo-dGTP into 8-oxo-dGMP. MTH1 is expressed in postmitotic neurons as well as in proliferative tissues, and it is localized both in the mitochondria and nucleus. MTH1 might be a useful marker of oxidative stress and its level increased upon oxidative stress. Increased expression of MTH1 were also found in various cancer tissues and neurodegenerative diseases.

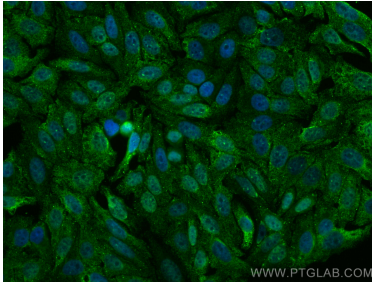
Storage

Storage:
Store at -20°C. Avoid exposure to light. Stable for one year after shipment.
Storage Buffer:
PBS with 50% Glycerol, 0.05% Proclin300, 0.5% BSA, pH 7.3.
Aliquoting is unnecessary for -20°C storage

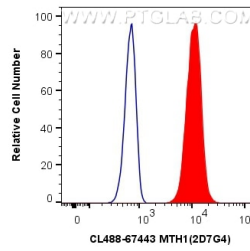
For technical support and original validation data for this product please contact:
T: 1 (888) 4PTGLAB (1-888-478-4522) (toll free in USA), or 1(312) 455-8498 (outside USA)
E: proteintech@ptglab.com
W: ptglab.com

This product is exclusively available under Proteintech Group brand and is not available to purchase from any other manufacturer.

Selected Validation Data



Immunofluorescent analysis of (4% PFA) fixed HepG2 cells using Coralite® Plus 488 MTH1 antibody (CL488-67443, Clone: 2D7G4) at dilution of 1:200.



1X10⁶ Jurkat cells were intracellularly stained with 0.4 ug Coralite® Plus 488 Anti-Human MTH1 (CL488-67443, Clone:2D7G4) (red), or 0.4 ug Control Antibody. Cells were fixed and permeabilized with Transcription Factor Staining Buffer Kit (PF00011).