

For Research Use Only

CoraLite® Plus 488-conjugated ALDOA Monoclonal antibody

Catalog Number:CL488-67453



Basic Information

Catalog Number: CL488-67453	GenBank Accession Number: BC016800	Purification Method: Protein G purification
Size: 100ul , Concentration: 1000 ug/ml by Nanodrop;	GeneID (NCBI): 226	CloneNo.: 1D6C2
Source: Mouse	UNIPROT ID: P04075	Recommended Dilutions: IF/ICC 1:50-1:500
Isotype: IgG1	Full Name: aldolase A, fructose-bisphosphate	Excitation/Emission maxima wavelengths: 493 nm / 522 nm
Immunogen Catalog Number: AG17952	Calculated MW: 39 kDa	
	Observed MW: 35-40 kDa	

Applications

Tested Applications: IF/ICC	Positive Controls: IF/ICC : HeLa cells,
Species Specificity: Human, Mouse, Rat	

Background Information

ALDOA(Fructose-bisphosphate aldolase A) is also named as lung cancer antigen NY-LU-1,muscle-type aldolase,ALDA and belongs to the class I fructose-bisphosphate aldolase family.The ALDOA gene encodes a homotetrameric protein(PMID:14615364).It is found in skeletal muscle and red blood cells, and functions in glycolysis, promoting the reversible cleavage of FBP to triose phosphate, G-3-P and DHAP. ALDOA is upregulated in various cancers, including human lung squamous and renal cell carcinomas(PMID:19937139).

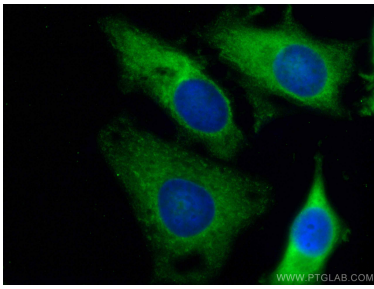
Storage

Storage:
Store at -20°C. Avoid exposure to light. Stable for one year after shipment.
Storage Buffer:
PBS with 50% Glycerol, 0.05% Proclin300, 0.5% BSA, pH 7.3.
Aliquoting is unnecessary for -20°C storage

For technical support and original validation data for this product please contact:
T: 1 (888) 4PTGLAB (1-888-478-4522) (toll free in USA), or 1(312) 455-8498 (outside USA)
E: proteintech@ptglab.com
W: ptglab.com

This product is exclusively available under Proteintech Group brand and is not available to purchase from any other manufacturer.

Selected Validation Data



Immunofluorescent analysis of (-20°C Ethanol) fixed HeLa cells using Coralite® Plus 488 ALDOA antibody (CL488-67453, Clone: 1D6C2) at dilution of 1:200.