

For Research Use Only

CoraLite® Plus 488-conjugated Arfaptin-1 Monoclonal antibody



Catalog Number:CL488-67461

Basic Information

Catalog Number: CL488-67461	GenBank Accession Number: BC103759	Purification Method: Protein A purification
Size: 100ul , Concentration: 1000 µg/ml by Nanodrop;	GeneID (NCBI): 27236	CloneNo.: 2A10B3
Source: Mouse	Full Name: ADP-ribosylation factor interacting protein 1	Recommended Dilutions: IF 1:50-1:500
Isotype: IgG2a	Calculated MW: 373 aa, 42 kDa	Excitation/Emission maxima wavelengths: 488 nm / 515 nm
Immunogen Catalog Number: AG12097		

Applications

Tested Applications:

IF

Species Specificity:

Human, mouse

Positive Controls:

IF : mouse kidney tissue,

Background Information

Storage

Storage:

Store at -20°C. Avoid exposure to light.

Storage Buffer:

PBS with 50% Glycerol, 0.05% Proclin300, 0.5% BSA, pH 7.3.

Aliquoting is unnecessary for -20°C storage

*** 20ul sizes contain 0.1% BSA

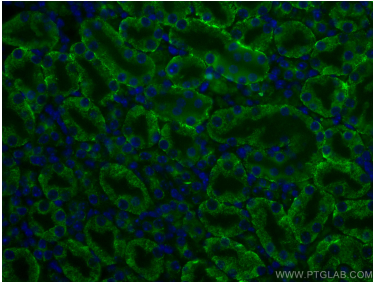
For technical support and original validation data for this product please contact:

T: 1 (888) 4PTGLAB (1-888-478-4522) (toll free
in USA), or 1(312) 455-8498 (outside USA)

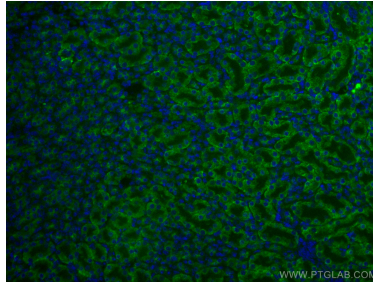
E: proteintech@ptglab.com
W: ptglab.com

This product is exclusively available under Proteintech Group brand and is not available to purchase from any other manufacturer.

Selected Validation Data



Immunofluorescent analysis of (4% PFA) fixed mouse kidney tissue using Coralite® Plus 488 Arfaptin-1 antibody (CL488-67461, Clone: 2A10B3) at dilution of 1:200.



Immunofluorescent analysis of (4% PFA) fixed mouse kidney tissue using Coralite® Plus 488 Arfaptin-1 antibody (CL488-67461, Clone: 2A10B3) at dilution of 1:200.