

For Research Use Only

CoraLite® Plus 488-conjugated PSMG3 Monoclonal antibody



Catalog Number: CL488-67466

Basic Information

Catalog Number: CL488-67466	GenBank Accession Number: BC004308	Purification Method: Protein A purification
Size: 100ul , Concentration: 1000 µg/ml by Nanodrop;	GeneID (NCBI): 84262	CloneNo.: 2H9C3
Source: Mouse	Full Name: proteasome (prosome, macropain) assembly chaperone 3	Recommended Dilutions: IF 1:50-1:500
Isotype: IgG2b	Calculated MW: 13 kDa	Excitation/Emission maxima wavelengths: 493 nm / 522 nm
Immunogen Catalog Number: AG8384		

Applications

Tested Applications: IF	Positive Controls: IF : HeLa cells,
Species Specificity: Human	

Background Information

PSMG3, also named as C7orf48 and PAC3, is a chaperone protein which promotes assembly of the 20S proteasome. It may cooperate with PSMG1-PSMG2 heterodimers to orchestrate the correct assembly of proteasomes.

Storage

Storage:
Store at -20°C. Avoid exposure to light. Stable for one year after shipment.
Storage Buffer:
PBS with 50% Glycerol, 0.05% Proclin300, 0.5% BSA, pH 7.3.
Aliquoting is unnecessary for -20°C storage

*** 20ul sizes contain 0.1% BSA

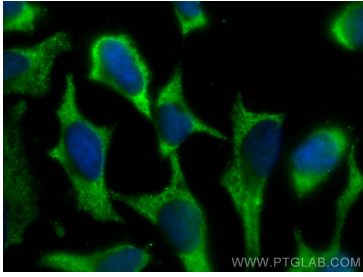
For technical support and original validation data for this product please contact:

T: 1 (888) 4PTGLAB (1-888-478-4522) (toll free
in USA), or 1(312) 455-8498 (outside USA)

E: proteintech@ptglab.com
W: ptglab.com

This product is exclusively available under Proteintech Group brand and is not available to purchase from any other manufacturer.

Selected Validation Data



Immunofluorescent analysis of (-20°C Ethanol) fixed HeLa cells using CoraLite® Plus 488 PSMG3 antibody (CL488-67466, Clone: 2H9C3) at dilution of 1:200.