

For Research Use Only

CoraLite® Plus 488-conjugated MIS12 Monoclonal antibody

Catalog Number: CL488-67475



Basic Information

Catalog Number:

CL488-67475

Size:

100ul , Concentration: 1000 ug/ml by Nanodrop;

Source:

Mouse

Isotype:

IgG2a

Immunogen Catalog Number:

AG16826

GenBank Accession Number:

BC000229

GeneID (NCBI):

79003

UNIPROT ID:

Q9H081

Full Name:

MIS12, MIND kinetochore complex component, homolog (yeast)

Calculated MW:

205 aa, 24 kDa

Observed MW:

25 kDa

Purification Method:

Protein A purification

CloneNo.:

2G5F6

Recommended Dilutions:

WB 1:500-1:1000

Excitation/Emission maxima wavelengths:

493 nm / 522 nm

Applications

Tested Applications:

WB, FC (Intra)

Species Specificity:

human

Positive Controls:

WB : MCF-7 cells, HeLa cells, HepG2 cells

Storage

Storage:

Store at -20°C. Avoid exposure to light. Stable for one year after shipment.

Storage Buffer:

PBS with 50% Glycerol, 0.05% Proclin300, 0.5% BSA, pH 7.3.

Aliquoting is unnecessary for -20°C storage

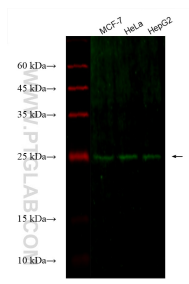
For technical support and original validation data for this product please contact:

T: 1 (888) 4PTGLAB (1-888-478-4522) (toll free in USA), or 1(312) 455-8498 (outside USA)

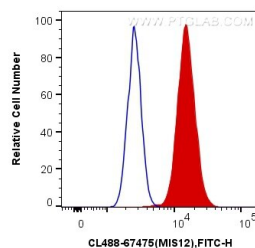
E: proteintech@ptglab.com
W: ptglab.com

This product is exclusively available under Proteintech Group brand and is not available to purchase from any other manufacturer.

Selected Validation Data



Various lysates were subjected to SDS PAGE followed by western blot with CL488-67475 (MIS12 antibody) at dilution of 1:500 incubated at room temperature for 1.5 hours.



1X10⁶ HeLa cells were intracellularly stained with 0.4 ug CoraLite® Plus 488 Anti-Human MIS12 (CL488-67475, Clone:2G5F6) (red), or 0.4 ug Mouse IgG2a Isotype Control (CL488-66360-2, Clone: K11A1B2A2) (blue). Cells were fixed and permeabilized with Transcription Factor Staining Buffer Kit (PF00011).