

For Research Use Only

# CoraLite® Plus 488-conjugated RAN Monoclonal antibody



Catalog Number: CL488-67500

## Basic Information

<b>Catalog Number:</b> CL488-67500	<b>GenBank Accession Number:</b> BC004272	<b>Purification Method:</b> Protein A purification
<b>Size:</b> 100ul , Concentration: 1000 µg/ml by Nanodrop;	<b>GeneID (NCBI):</b> 5901	<b>CloneNo.:</b> 1B11E1
<b>Source:</b> Mouse	<b>Full Name:</b> RAN, member RAS oncogene family	<b>Recommended Dilutions:</b> WB 1:500-1:2000
<b>Isotype:</b> IgG2b	<b>Calculated MW:</b> 25 kDa	<b>Excitation/Emission maxima wavelengths:</b> 488 nm / 515 nm
<b>Immunogen Catalog Number:</b> AG30034	<b>Observed MW:</b> 24 kDa	

## Applications

<b>Tested Applications:</b> WB	<b>Positive Controls:</b> WB : HEK-293 cells, HeLa cells, HepG2 cells, Jurkat cells
<b>Species Specificity:</b> Human, mouse, rat	

## Background Information

### Storage

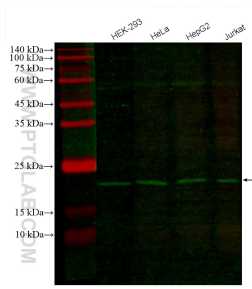
**Storage:**  
Store at -20°C. Avoid exposure to light.  
**Storage Buffer:**  
PBS with 50% Glycerol, 0.05% Proclin300, 0.5% BSA, pH 7.3.  
Aliquoting is unnecessary for -20°C storage

\*\*\* 20ul sizes contain 0.1% BSA

For technical support and original validation data for this product please contact:  
T: 1 (888) 4PTGLAB (1-888-478-4522) (toll free in USA), or 1(312) 455-8498 (outside USA)  
E: [proteintech@ptglab.com](mailto:proteintech@ptglab.com)  
W: [ptglab.com](http://ptglab.com)

This product is exclusively available under Proteintech Group brand and is not available to purchase from any other manufacturer.

## Selected Validation Data



Various lysates were subjected to SDS PAGE followed by western blot with CL488-67500 (RAN antibody) at dilution of 1:1000 incubated at room temperature for 1.5 hours.