

For Research Use Only

CoraLite® Plus 488-conjugated RAB2A Monoclonal antibody

Catalog Number:CL488-67501



Basic Information

Catalog Number: CL488-67501	GenBank Accession Number: BC008929	Purification Method: Protein A purification
Size: 100ul , Concentration: 1000 ug/ml by Nanodrop;	GeneID (NCBI): 5862	CloneNo.: 3E1B10
Source: Mouse	UNIPROT ID: P61019	Recommended Dilutions: IF-P 1:50-1:500
Isotype: IgG2b	Full Name: RAB2A, member RAS oncogene family	Excitation/Emission maxima wavelengths: 493 nm / 522 nm
Immunogen Catalog Number: AG7939	Calculated MW: 24 kDa	
	Observed MW: 21 kDa	

Applications

Tested Applications: IF-P	Positive Controls: IF-P : mouse brain tissue,
Species Specificity: Human, mouse, rat	

Background Information

The protein belongs to the Rab family, members of which are small molecular weight guanosine triphosphatases (GTPases) that contain highly conserved domains involved in GTP binding and hydrolysis. The Rabs are membrane-bound proteins, involved in vesicular fusion and trafficking. This protein is a resident of pre-Golgi intermediates, and is required for protein transport from the endoplasmic reticulum (ER) to the Golgi complex.

Storage

Storage:
Store at -20°C. Avoid exposure to light. Stable for one year after shipment.
Storage Buffer:
PBS with 50% Glycerol, 0.05% Proclin300, 0.5% BSA, pH 7.3.
Aliquoting is unnecessary for -20°C storage

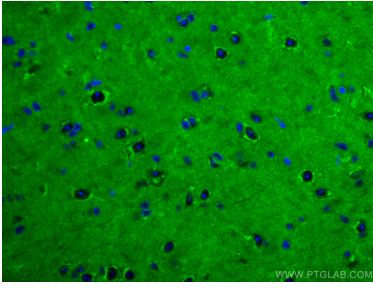
For technical support and original validation data for this product please contact:

T: 1 (888) 4PTGLAB (1-888-478-4522) (toll free
in USA), or 1(312) 455-8498 (outside USA)

E: proteintech@ptglab.com
W: ptglab.com

This product is exclusively available under Proteintech Group brand and is not available to purchase from any other manufacturer.

Selected Validation Data



Immunofluorescent analysis of (4% PFA) fixed mouse brain tissue using CoraLite® Plus 488 RAB2A antibody (CL488-67501, Clone: 3E1B10) at dilution of 1:200. DAPI (blue).