

For Research Use Only

CoraLite® Plus 488-conjugated BSEP Monoclonal antibody



Catalog Number: CL488-67512

Basic Information

| | | |
|---|---|---|
| Catalog Number: CL488-67512 | GenBank Accession Number: NM_003742 | Purification Method: Protein G purification |
| Size: 100ul , Concentration: 1000 µg/ml by Nanodrop; | GeneID (NCBI): 8647 | CloneNo.: 3C11D5 |
| Source: Mouse | Full Name: ATP-binding cassette, sub-family B (MDR/TAP), member 11 | Recommended Dilutions: IF 1:50-1:500 |
| Isotype: IgG1 | Calculated MW: 146 kDa | Excitation/Emission maxima wavelengths: 488 nm / 515 nm |
| Immunogen Catalog Number: AG29135 | Observed MW: 150-160 kDa | |

Applications

| | |
|--------------------------------------|---|
| Tested Applications: IF | Positive Controls: IF : HeLa cells, |
| Species Specificity: Human | |

Background Information

ABCB11, also named as BSEP, belongs to the ABC transporter superfamily. ABCB11 involved in the ATP-dependent secretion of bile salts into the canalculus of hepatocytes. Mutation of ABCB11 will cause the progressive familial intrahepatic cholestasis type 2 (PFIC2) and the benign recurrent intrahepatic cholestasis type 2 (BRIC2). Genetic variations in ABCB11 may play a role in drug-induced cholestasis causing liver damage.

Storage

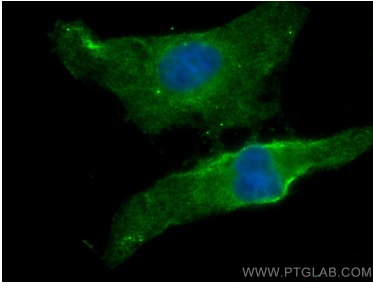
Storage:
Store at -20°C. Avoid exposure to light.
Storage Buffer:
PBS with 50% Glycerol, 0.05% Proclin300, 0.5% BSA, pH 7.3.
Aliquoting is unnecessary for -20°C storage

*** 20ul sizes contain 0.1% BSA

For technical support and original validation data for this product please contact:
T: 1 (888) 4PTGLAB (1-888-478-4522) (toll free in USA), or 1(312) 455-8498 (outside USA) E: proteintech@ptglab.com W: ptglab.com

This product is exclusively available under Proteintech Group brand and is not available to purchase from any other manufacturer.

Selected Validation Data



Immunofluorescent analysis of (4% PFA) fixed HeLa cells using Coralite® Plus 488 BSEP antibody (CL488-67512, Clone: 3C11D5) at dilution of 1:200. Blue (DAPI).