

For Research Use Only

CoraLite® Plus 488-conjugated FES Monoclonal antibody

Catalog Number:CL488-67524



Basic Information

Catalog Number: CL488-67524	GenBank Accession Number: BC035357	Purification Method: Protein A purification
Size: 100ul , Concentration: 1000 ug/ml by Nanodrop;	GeneID (NCBI): 2242	CloneNo.: 1E1B11
Source: Mouse	UNIPROT ID: P07332	Recommended Dilutions: IF/ICC 1:50-1:500
Isotype: IgG2b	Full Name: feline sarcoma oncogene	Excitation/Emission maxima wavelengths: 493 nm / 522 nm
Immunogen Catalog Number: AG28108	Calculated MW: 822 aa, 94 kDa	
	Observed MW: 93 kDa, 79 kDa, 87 kDa, 85 kDa	

Applications

Tested Applications: IF/ICC	Positive Controls: IF/ICC : A549 cells,
Species Specificity: human	

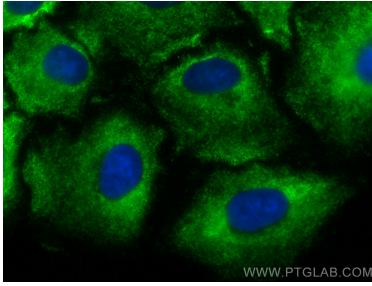
Storage

Storage:
Store at -20°C. Avoid exposure to light. Stable for one year after shipment.
Storage Buffer:
PBS with 50% glycerol, 0.05% Proclin300, 0.5% BSA
Aliquoting is unnecessary for -20°C storage

For technical support and original validation data for this product please contact:
T: 1 (888) 4PTGLAB (1-888-478-4522) (toll free in USA), or 1(312) 455-8498 (outside USA)
E: proteintech@ptglab.com
W: ptglab.com

This product is exclusively available under Proteintech Group brand and is not available to purchase from any other manufacturer.

Selected Validation Data



Immunofluorescent analysis of (-20°C Methanol) fixed A549 cells using CoraLite® Plus 488 FES antibody (CL488-67524, Clone: 1E1B11) at dilution of 1:200.