

For Research Use Only

# CoraLite® Plus 488-conjugated GPT/ALT1 Monoclonal antibody



Catalog Number:CL488-67531

## Basic Information

<b>Catalog Number:</b> CL488-67531	<b>GenBank Accession Number:</b> BC018207	<b>Purification Method:</b> Protein G purification
<b>Size:</b> 100ul , Concentration: 1000 µg/ml by Nanodrop;	<b>GeneID (NCBI):</b> 2875	<b>CloneNo.:</b> 5F6B5
<b>Source:</b> Mouse	<b>Full Name:</b> glutamic-pyruvate transaminase (alanine aminotransferase)	<b>Recommended Dilutions:</b> IF 1:50-1:500
<b>Isotype:</b> IgG1	<b>Calculated MW:</b> 496 aa, 55 kDa	
<b>Immunogen Catalog Number:</b> AG10453	<b>Observed MW:</b> 52 kDa	

## Applications

<b>Tested Applications:</b> IF	<b>Positive Controls:</b> IF : HepG2 cells,
<b>Species Specificity:</b> Human, Pig	

## Background Information

GPT, also known as ALT1 (glutamate-pyruvate transaminase 1), catalyzes the reversible transamination between alanine and 2-oxoglutarate to generate pyruvate and glutamate and, therefore, plays a key role in the intermediary metabolism of glucose and amino acids. Serum activity levels of this enzyme are routinely used as a biomarker of liver injury caused by drug toxicity, infection, alcohol, and steatosis. A related gene on chromosome 16 encodes a putative mitochondrial alanine aminotransaminase.

## Storage

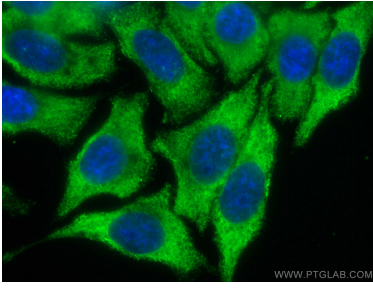
**Storage:**  
Store at -20°C. Avoid exposure to light. Stable for one year after shipment.  
**Storage Buffer:**  
PBS with 50% Glycerol, 0.05% Proclin300, 0.5% BSA, pH 7.3.  
Aliquoting is unnecessary for -20°C storage

\*\*\* 20ul sizes contain 0.1% BSA

For technical support and original validation data for this product please contact:  
T: 1 (888) 4PTGLAB (1-888-478-4522) (toll free in USA), or 1(312) 455-8498 (outside USA) E: proteintech@ptglab.com W: ptglab.com

This product is exclusively available under Proteintech Group brand and is not available to purchase from any other manufacturer.

## Selected Validation Data



Immunofluorescent analysis of (-20°C Methanol) fixed HepG2 cells using CoraLite® Plus 488 GPT/ALT1 antibody (CL488-67531, Clone: 5F6B5) at dilution of 1:200.