

For Research Use Only

CoraLite® Plus 488-conjugated RHOC Monoclonal antibody

Catalog Number: CL488-67542



Basic Information

Catalog Number: CL488-67542	GenBank Accession Number: BC007245	Purification Method: Protein G purification
Size: 100ul , Concentration: 1000 ug/ml by Nanodrop;	GeneID (NCBI): 389	CloneNo.: 1G1C1
Source: Mouse	UNIPROT ID: P08134	Recommended Dilutions: IF/ICC 1:50-1:500
Isotype: IgG1	Full Name: ras homolog gene family, member C	Excitation/Emission maxima wavelengths: 493 nm / 522 nm
Immunogen Catalog Number: AG14633	Calculated MW: 22 kDa	

Applications

Tested Applications: IF/ICC	Positive Controls: IF/ICC : HeLa cells,
Species Specificity: Human, mouse, rat	

Background Information

Ras homolog family member C (RHOC) encodes a Rho-related GTP-binding protein, which belongs to small GTPase superfamily and also Rho family. RHOC. Regulates a signal transduction pathway linking plasma membrane receptors to the assembly of focal adhesions and actin stress fibers. Expression of RHOC contributes to metastatic phenotype of melanoma cells and is associated with multiple cancers including gastric carcinomas, ovarian carcinomas and breast cancer as well.

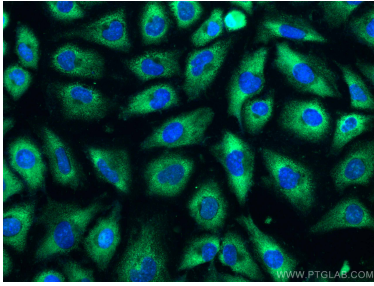
Storage

Storage:
Store at -20°C. Avoid exposure to light. Stable for one year after shipment.
Storage Buffer:
PBS with 50% Glycerol, 0.05% Proclin300, 0.5% BSA, pH 7.3.
Aliquoting is unnecessary for -20°C storage

For technical support and original validation data for this product please contact:
T: 1 (888) 4PTGLAB (1-888-478-4522) (toll free in USA), or 1(312) 455-8498 (outside USA)
E: proteintech@ptglab.com
W: ptglab.com

This product is exclusively available under Proteintech Group brand and is not available to purchase from any other manufacturer.

Selected Validation Data



Immunofluorescent analysis of (4% PFA) fixed HeLa cells using CoraLite® Plus 488 RHOC antibody (CL488-67542, Clone: 1G1C1) at dilution of 1:100.