

For Research Use Only

CoraLite® Plus 488-conjugated SUMO1 Monoclonal antibody



Catalog Number: CL488-67559

Basic Information

Catalog Number: CL488-67559	GenBank Accession Number: BC006462	Purification Method: Protein G purification
Size: 100ul , Concentration: 1000 µg/ml by Nanodrop;	GeneID (NCBI): 7341	CloneNo.: 3B5B5
Source: Mouse	Full Name: SMT3 suppressor of mif two 3 homolog 1 (S. cerevisiae)	Recommended Dilutions: IF 1:50-1:500
Isotype: IgG1	Calculated MW: 12 kDa	Excitation/Emission maxima wavelengths: 493 nm / 522 nm
Immunogen Catalog Number: AG29402	Observed MW: 15-100 kDa	

Applications

Tested Applications: IF	Positive Controls: IF : MCF-7 cells,
Species Specificity: Human, Mouse, Rat	

Background Information

Storage

Storage:
Store at -20°C. Avoid exposure to light. Stable for one year after shipment.
Storage Buffer:
PBS with 50% Glycerol, 0.05% Proclin300, 0.5% BSA, pH 7.3.
Aliquoting is unnecessary for -20°C storage

*** 20ul sizes contain 0.1% BSA

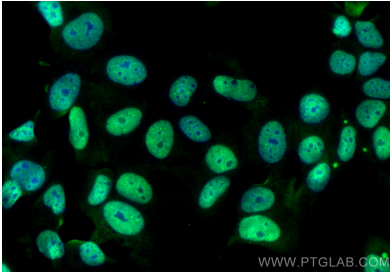
For technical support and original validation data for this product please contact:

T: 1 (888) 4PTGLAB (1-888-478-4522) (toll free in USA), or 1(312) 455-8498 (outside USA)

E: proteintech@ptglab.com
W: ptglab.com

This product is exclusively available under Proteintech Group brand and is not available to purchase from any other manufacturer.

Selected Validation Data



Immunofluorescent analysis of (4% PFA) fixed MCF-7 cells using CoraLite® Plus 488 SUMO1 antibody (CL488-67559, Clone: 3B5B5) at dilution of 1:200.