

For Research Use Only

# CoraLite® Plus 488-conjugated RPS14 Monoclonal antibody

Catalog Number:CL488-67566



## Basic Information

### Catalog Number:

CL488-67566

### Size:

100ul , Concentration: 1000 ug/ml by Nanodrop;

### Source:

Mouse

### Isotype:

IgG2b

### Immunogen Catalog Number:

AG30032

### GenBank Accession Number:

BC003401

### GeneID (NCBI):

6208

### UNIPROT ID:

P62263

### Full Name:

ribosomal protein S14

### Calculated MW:

16 kDa

### Observed MW:

16 kDa

### Purification Method:

Protein A purification

### CloneNo.:

3D5H5

### Recommended Dilutions:

IF/ICC 1:50-1:500

### Excitation/Emission maxima wavelengths:

493 nm / 522 nm

## Applications

### Tested Applications:

IF/ICC

### Species Specificity:

Human, mouse, rat

### Positive Controls:

IF/ICC : HepG2 cells,

## Background Information

The mammalian ribosome consists of 4 RNA species and approximately 80 different proteins. The ribosomal proteins are encoded by complex gene families that include at least 1 active intron-containing gene and multiple processed pseudogenes[ PMID 3785212]. The RPS14 gene, encoding a ribosomal protein that belongs to the 40S ribosome, and mapping to the commonly deleted region (CDR) of the 5q- syndrome, shows haploinsufficiency in the CD34+ cells of patients with this disorder[PMID:22430631].

## Storage

### Storage:

Store at -20°C. Avoid exposure to light. Stable for one year after shipment.

### Storage Buffer:

PBS with 50% Glycerol, 0.05% Proclin300, 0.5% BSA, pH 7.3.

Aliquoting is unnecessary for -20°C storage

For technical support and original validation data for this product please contact:

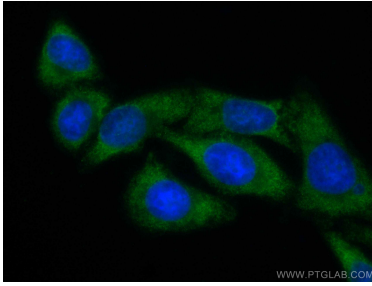
T: 1 (888) 4PTGLAB (1-888-478-4522) (toll free in USA), or 1(312) 455-8498 (outside USA)

E: [proteintech@ptglab.com](mailto:proteintech@ptglab.com)  
W: [ptglab.com](http://ptglab.com)

This product is exclusively available under Proteintech Group brand and is not available to purchase from any other manufacturer.

---

## Selected Validation Data



Immunofluorescent analysis of (-20°C Ethanol) fixed HepG2 cells using CoraLite® Plus 488 RPS14 antibody (CL488-67566, Clone: 3D5H5 ) at dilution of 1:200.