

For Research Use Only

CoraLite® Plus 488-conjugated IGFBP6 Monoclonal antibody



Catalog Number:CL488-67567

Basic Information

Catalog Number: CL488-67567	GenBank Accession Number: BC011708	Purification Method: Protein A purification
Size: 100ul , Concentration: 1000 µg/ml by Nanodrop;	GeneID (NCBI): 3489	CloneNo.: 1D12B3
Source: Mouse	Full Name: insulin-like growth factor binding protein 6	Excitation/Emission maxima wavelengths: 493 nm / 522 nm
Isotype: IgG2b	Calculated MW: 25 kDa	
Immunogen Catalog Number: AG30050	Observed MW: 30-33 kDa	

Applications

Tested Applications:
FC (Intra)

Species Specificity:
Human

Background Information

Insulin-like growth factor (IGF) binding protein (IGFBP6), a 240 amino acid protein, contains an IGFBP N-terminal domain and a thyroglobulin type-1 domain. It modulates the activity of IGF and shows independent effects of IGF, such as growth inhibition and apoptosis. It can decrease the proliferation and survival of cancer cells such as lung cancer cells and naso-pharyngeal cancer cells. IGFBP-6 is distinctive for its 50-fold higher binding affinity for IGF-II over IGF-I and this specificity makes it an attractive potential therapeutic candidate for IGF-II-dependent pediatric malignancies such as rhabdomyosarcoma (RMS). In addition, it was found that IGFBP6 can promote the migration of RMS cells in an IGF-independent manner, and MAPK pathways were involved in this process. Further study reported that IGFBP6 is one of most highly expressed proteins in varicose vein tissues and is involved in the proliferation of vascular smooth muscle cells (VSMCs), which may provide insights into the underlying pathogenesis of varicose vein.

Storage

Storage:
Store at -20°C. Avoid exposure to light. Stable for one year after shipment.

Storage Buffer:
PBS with 50% Glycerol, 0.05% Proclin300, 0.5% BSA, pH 7.3.

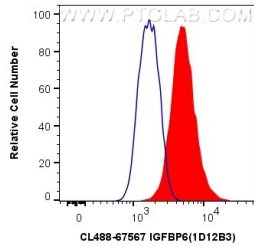
Aliquoting is unnecessary for -20°C storage

*** 20ul sizes contain 0.1% BSA

For technical support and original validation data for this product please contact:
T: 1 (888) 4PTGLAB (1-888-478-4522) (toll free in USA), or 1(312) 455-8498 (outside USA) E: proteintech@ptglab.com W: ptglab.com

This product is exclusively available under Proteintech Group brand and is not available to purchase from any other manufacturer.

Selected Validation Data



1X10⁶ A431 cells were intracellularly stained with 0.4 ug CoraLite® Plus 488 Anti-Human IGFBP6 (CL488-67567, Clone:1D12B3) (red), or 0.4 ug Control Antibody. Cells were fixed with 4% PFA and permeabilized with Flow Cytometry Perm Buffer (PF00011-C).