

For Research Use Only

# CoraLite® Plus 488-conjugated Calumenin Monoclonal antibody

Catalog Number: CL488-67585



## Basic Information

Catalog Number:

CL488-67585

Size:

100ul , Concentration: 1000 ug/ml by

Nanodrop;

Source:

Mouse

Isotype:

IgG1

Immunogen Catalog Number:

AG12073

GenBank Accession Number:

BC013383

GeneID (NCBI):

813

UNIPROT ID:

O43852

Full Name:

calumenin

Calculated MW:

315 aa, 37 kDa

Observed MW:

47-50 kDa

Purification Method:

Protein G purification

CloneNo.:

2D8B8

Recommended Dilutions:

IF/ICC 1:50-1:500

Excitation/Emission maxima  
wavelengths:

493 nm / 522 nm

## Applications

Tested Applications:

IF/ICC

Species Specificity:

Human, mouse, rat

Positive Controls:

IF/ICC : HeLa cells,

## Storage

Storage:

Store at -20°C. Avoid exposure to light. Stable for one year after shipment.

Storage Buffer:

PBS with 50% Glycerol, 0.05% Proclin300, 0.5% BSA, pH 7.3.

Aliquoting is unnecessary for -20°C storage

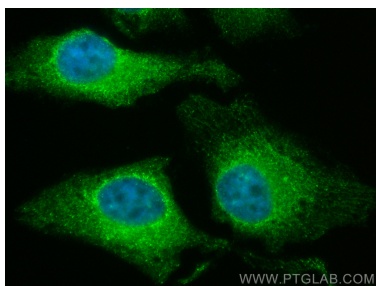
For technical support and original validation data for this product please contact:

T: 1 (888) 4PTGLAB (1-888-478-4522) (toll free  
in USA), or 1(312) 455-8498 (outside USA)

E: [proteintech@ptglab.com](mailto:proteintech@ptglab.com)  
W: [ptglab.com](http://ptglab.com)

This product is exclusively available under Proteintech Group brand and is not available to purchase from any other manufacturer.

## Selected Validation Data



Immunofluorescent analysis of (4% PFA) fixed HeLa cells using Coralite® Plus 488 Calumenin antibody (CL488-67585, Clone: 2D8B8 ) at dilution of 1:200.