

For Research Use Only

CoraLite® Plus 488-conjugated Importin Beta Monoclonal antibody

Catalog Number: CL488-67597



Basic Information

Catalog Number:

CL488-67597

GenBank Accession Number:

BC003572

Purification Method:

Protein A purification

Size:

100ul , Concentration: 1000 ug/ml by Nanodrop;

GeneID (NCBI):

3837

CloneNo.:

1A12B1

Source:

Mouse

UNIPROT ID:

Q14974

Excitation/Emission maxima wavelengths:

493 nm / 522 nm

Isotype:

IgG2b

Full Name:

karyopherin (importin) beta 1

Calculated MW:

97 kDa

Immunogen Catalog Number:

AG23094

Observed MW:

95-97 kDa

Applications

Tested Applications:

FC (Intra)

Species Specificity:

human

Background Information

Importin beta1, also known karyopherin beta or KPNB1, is a nuclear transport receptor that plays a key role in the nuclear import process. Importin beta1 and importin alpha work in concert to transport cargo into the nucleus, functioning as an essential component of the classical nuclear localization signal (NLS) pathway. Elevated expression of importin beta1 has been found in cervical tumors. (22125623)

Storage

Storage:

Store at -20°C. Avoid exposure to light. Stable for one year after shipment.

Storage Buffer:

PBS with 50% Glycerol, 0.05% Proclin300, 0.5% BSA, pH 7.3.

Aliquoting is unnecessary for -20°C storage

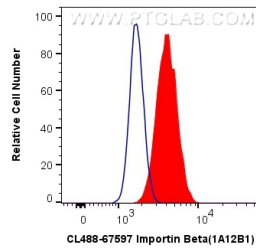
For technical support and original validation data for this product please contact:

T: 1 (888) 4PTGLAB (1-888-478-4522) (toll free in USA), or 1(312) 455-8498 (outside USA)

E: proteintech@ptglab.com
W: ptglab.com

This product is exclusively available under Proteintech Group brand and is not available to purchase from any other manufacturer.

Selected Validation Data



1X10⁶ Jurkat cells were intracellularly stained with 0.8 ug CoraLite® Plus 488 Anti-Human Importin Beta (CL488-67597, Clone:1A12B1) (red), or 0.8 ug Control Antibody. Cells were fixed with 4% PFA and permeabilized with Flow Cytometry Perm Buffer (PF00011-C).