

For Research Use Only

CoraLite® Plus 488-conjugated SERPIND1 Monoclonal antibody

Catalog Number:CL488-67602



Basic Information

Catalog Number: CL488-67602	GenBank Accession Number: BC035028	Purification Method: Protein G purification
Size: 100ul , Concentration: 1000 ug/ml by Nanodrop;	GeneID (NCBI): 3053	CloneNo.: 2C1E1
Source: Mouse	UNIPROT ID: P05546	Recommended Dilutions: IF/ICC 1:50-1:500
Isotype: IgG1	Full Name: serpin peptidase inhibitor, clade D (heparin cofactor), member 1	Excitation/Emission maxima wavelengths: 493 nm / 522 nm
Immunogen Catalog Number: AG26351	Calculated MW: 499 aa, 57 kDa	

Applications

Tested Applications: IF/ICC	Positive Controls: IF/ICC : HepG2 cells,
Species Specificity: Human	

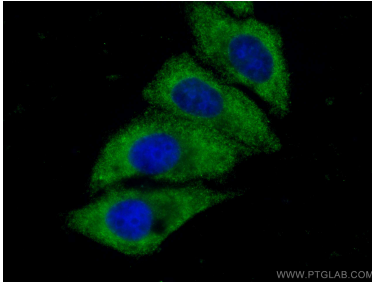
Storage

Storage:
Store at -20°C. Avoid exposure to light. Stable for one year after shipment.
Storage Buffer:
PBS with 50% Glycerol, 0.05% Proclin300, 0.5% BSA, pH 7.3.
Aliquoting is unnecessary for -20°C storage

For technical support and original validation data for this product please contact:
T: 1 (888) 4PTGLAB (1-888-478-4522) (toll free in USA), or 1(312) 455-8498 (outside USA)
E: proteintech@ptglab.com
W: ptglab.com

This product is exclusively available under Proteintech Group brand and is not available to purchase from any other manufacturer.

Selected Validation Data



Immunofluorescent analysis of (-20°C Ethanol)
fixed HepG2 cells using CoraLite® Plus 488
SERPIND1 antibody (CL488-67602, Clone: 2C1E1)
at dilution of 1:200.