

For Research Use Only

# CoraLite® Plus 488-conjugated ANO2 Monoclonal antibody

Catalog Number: CL488-67638



## Basic Information

Catalog Number:

CL488-67638

Size:

100ul , Concentration: 1000 ug/ml by

Nanodrop;

Source:

Mouse

Isotype:

IgG2a

GenBank Accession Number:

NM\_020373

GeneID (NCBI):

57101

UNIPROT ID:

Q9NQ90

Full Name:

anoctamin 2

Calculated MW:

114 kDa

Purification Method:

Protein A purification

CloneNo.:

2F12G1

Recommended Dilutions:

IF-P 1:50-1:500

Excitation/Emission maxima  
wavelengths:

493 nm / 522 nm

## Applications

Tested Applications:

IF-P

Species Specificity:

Human, mouse

Positive Controls:

IF-P : mouse eye tissue,

## Background Information

ANO2, also named as C12orf3 and TMEM16B, belongs to the anoctamin family. It acts as a calcium-activated chloride channel (CaCC), mostly in photoreceptors. It may mediate olfactory amplification in olfactory sensory neurons (OSNs) and light perception amplification in retina.

## Storage

Storage:

Store at -20°C. Avoid exposure to light. Stable for one year after shipment.

Storage Buffer:

PBS with 50% Glycerol, 0.05% Proclin300, 0.5% BSA, pH 7.3.

Aliquoting is unnecessary for -20°C storage

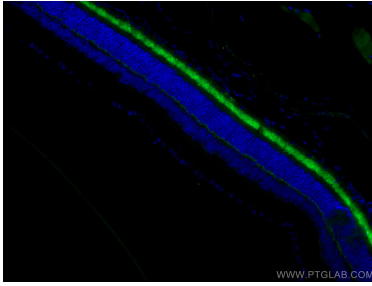
For technical support and original validation data for this product please contact:

T: 1 (888) 4PTGLAB (1-888-478-4522) (toll free  
in USA), or 1(312) 455-8498 (outside USA)

E: [proteintech@ptglab.com](mailto:proteintech@ptglab.com)  
W: [ptglab.com](http://ptglab.com)

This product is exclusively available under Proteintech Group brand and is not available to purchase from any other manufacturer.

## Selected Validation Data



Immunofluorescent analysis of (4% PFA) fixed mouse eye tissue using CoraLite® Plus 488 ANO2 antibody (CL488-67638, Clone: 2F12G1 ) at dilution of 1:200.