

For Research Use Only

# CoraLite® Plus 488-conjugated GRIA1 Monoclonal antibody

Catalog Number: CL488-67642



## Basic Information

<b>Catalog Number:</b> CL488-67642	<b>GenBank Accession Number:</b> BC111734	<b>Purification Method:</b> Protein A purification
<b>Size:</b> 100ul , Concentration: 1000 ug/ml by Nanodrop;	<b>GeneID (NCBI):</b> 2890	<b>CloneNo.:</b> 1F4A1
<b>Source:</b> Mouse	<b>UNIPROT ID:</b> P42261	<b>Recommended Dilutions:</b> IF-P 1:50-1:500
<b>Isotype:</b> IgG2b	<b>Full Name:</b> glutamate receptor, ionotropic, AMPA 1	<b>Excitation/Emission maxima wavelengths:</b> 493 nm / 522 nm
<b>Immunogen Catalog Number:</b> AG28932	<b>Calculated MW:</b> 906 aa, 102 kDa	
	<b>Observed MW:</b> 100 kDa	

## Applications

<b>Tested Applications:</b> IF-P	<b>Positive Controls:</b> IF-P : mouse brain tissue,
<b>Species Specificity:</b> Human, Pig, Mouse, Rat, Rabbit	

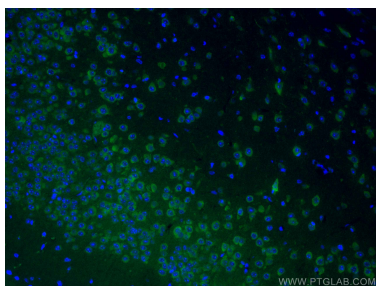
## Storage

**Storage:**  
Store at -20°C. Avoid exposure to light. Stable for one year after shipment.  
**Storage Buffer:**  
PBS with 50% Glycerol, 0.05% Proclin300, 0.5% BSA, pH 7.3.  
Aliquoting is unnecessary for -20°C storage

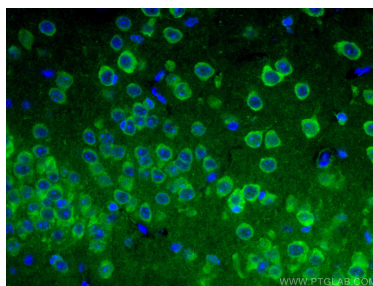
For technical support and original validation data for this product please contact:  
T: 1 (888) 4PTGLAB (1-888-478-4522) (toll free in USA), or 1(312) 455-8498 (outside USA)  
E: [proteintech@ptglab.com](mailto:proteintech@ptglab.com)  
W: [ptglab.com](http://ptglab.com)

This product is exclusively available under Proteintech Group brand and is not available to purchase from any other manufacturer.

## Selected Validation Data



Immunofluorescent analysis of (4% PFA) fixed mouse brain tissue using CoraLite® Plus 488 GRIA1 antibody (CL488-67642, Clone: 1F4A1 ) at dilution of 1:100.



Immunofluorescent analysis of (4% PFA) fixed mouse brain tissue using CoraLite® Plus 488 GRIA1 antibody (CL488-67642, Clone: 1F4A1 ) at dilution of 1:100.