

For Research Use Only

CoraLite® Plus 488-conjugated IMPDH2 Monoclonal antibody

Catalog Number: CL488-67663



Basic Information

Catalog Number:

CL488-67663

Size:

100ul , Concentration: 1000 ug/ml by
Nanodrop;

Source:

Mouse

Isotype:

IgG1

Immunogen Catalog Number:

AG17170

GenBank Accession Number:

BC012840

GeneID (NCBI):

3615

UNIPROT ID:

P12268

Full Name:

IMP (inosine monophosphate)
dehydrogenase 2

Calculated MW:

514 aa, 56 kDa

Observed MW:

56 kDa

Purification Method:

Protein A purification

CloneNo.:

1B1G8

Recommended Dilutions:

IF/ICC 1:50-1:500

Excitation/Emission maxima
wavelengths:

493 nm / 522 nm

Applications

Tested Applications:

IF/ICC

Species Specificity:

Human, mouse, rat

Positive Controls:

IF/ICC : A549 cells,

Background Information

IMPDH2, also named as IMPD2, belongs to the IMPDH/GMPR family. It is a rate limiting enzyme in the de novo synthesis of guanine nucleotides and therefore is involved in the regulation of cell growth. It may also have a role in the development of malignancy and the growth progression of some tumors. IMPDH2 is a key enzyme in the purine nucleotide biosynthetic pathway and constitutes a pivotal biological target for immunosuppressant and antiviral drugs. (PMID:21181270)

Storage

Storage:

Store at -20°C. Avoid exposure to light. Stable for one year after shipment.

Storage Buffer:

PBS with 50% Glycerol, 0.05% Proclin300, 0.5% BSA, pH 7.3.

Aliquoting is unnecessary for -20°C storage

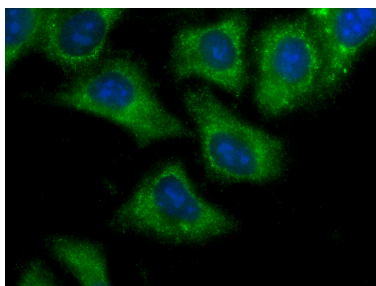
For technical support and original validation data for this product please contact:

T: 1 (888) 4PTGLAB (1-888-478-4522) (toll free
in USA), or 1(312) 455-8498 (outside USA)

E: proteintech@ptglab.com
W: ptglab.com

This product is exclusively available under Proteintech Group brand and is not available to purchase from any other manufacturer.

Selected Validation Data



Immunofluorescent analysis of (-20°C Ethanol) fixed A549 cells using CoraLite® Plus 488 IMPDH2 antibody (CL488-67663, Clone: 1B1G8) at dilution of 1:100.