

For Research Use Only

CoraLite® Plus 488-conjugated Ins1 Monoclonal antibody

Catalog Number: CL488-67668

1 Publications



Basic Information

Catalog Number:

CL488-67668

Size:

100ul , Concentration: 1000 ug/ml by Nanodrop;

Source:

Mouse

Isotype:

IgG1

Immunogen Catalog Number:

AG29988

GenBank Accession Number:

NM_008386

GeneID (NCBI):

16333

UNIPROT ID:

P01325

Full Name:

insulin I

Calculated MW:

12 kDa

Purification Method:

Protein G purification

CloneNo.:

1H2C11

Recommended Dilutions:

IF-P 1:150-1:600

Excitation/Emission maxima wavelengths:

493 nm / 522 nm

Applications

Tested Applications:

IF-P

Cited Applications:

IF

Species Specificity:

mouse, rat

Cited Species:

mouse

Positive Controls:

IF-P: mouse pancreas tissue,

Background Information

insulin I is a peptide hormone that plays a vital role in the regulation of carbohydrate and lipid metabolism. The encoded precursor protein undergoes proteolytic cleavage to produce a disulfide-linked heterodimeric functional protein that is stored in secretory granules. An increase in blood glucose levels, among others, induces the release of insulin from the secretory granules. Mice deficient in the functional hormone encoded by this gene develop diabetes mellitus.

Notable Publications

Author	Pubmed ID	Journal	Application
Althea N Waldhart	37168572	iScience	IF

Storage

Storage:

Store at -20°C. Avoid exposure to light. Stable for one year after shipment.

Storage Buffer:

PBS with 50% Glycerol, 0.05% Proclin300, 0.5% BSA, pH 7.3.

Aliquoting is unnecessary for -20°C storage

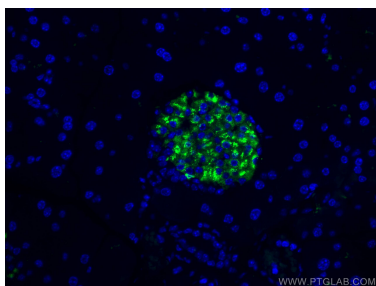
For technical support and original validation data for this product please contact:

T: 1 (888) 4PTGLAB (1-888-478-4522) (toll free in USA), or 1(312) 455-8498 (outside USA)

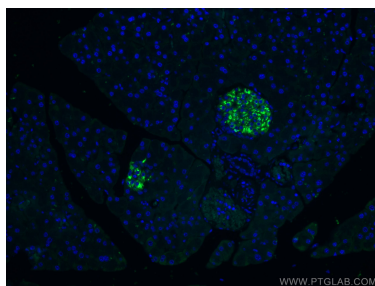
E: proteintech@ptglab.com
W: ptglab.com

This product is exclusively available under Proteintech Group brand and is not available to purchase from any other manufacturer.

Selected Validation Data



Immunofluorescent analysis of (4% PFA) fixed mouse pancreas tissue using CoraLite® Plus 488-conjugated Ins1 antibody (CL488-67668, Clone: 1H2C11) at dilution of 1:300.



Immunofluorescent analysis of (4% PFA) fixed mouse pancreas tissue using CoraLite® Plus 488-conjugated Ins1 antibody (CL488-67668, Clone: 1H2C11) at dilution of 1:300.