

For Research Use Only

CoraLite® Plus 488-conjugated DVL1 Monoclonal antibody



Catalog Number: **CL488-67672**

Basic Information

Catalog Number: CL488-67672	GenBank Accession Number: BC050454	Purification Method: Protein G purification
Size: 100ul , Concentration: 1000 µg/ml by Nanodrop;	GeneID (NCBI): 1855	CloneNo.: 1A2A5
Source: Mouse	Full Name: dishevelled, dsh homolog 1 (Drosophila)	Recommended Dilutions: IF 1:50-1:500
Isotype: IgG1	Calculated MW: 75 kDa	
Immunogen Catalog Number: AG26083	Observed MW: 70-75 kDa	

Applications

Tested Applications: IF	Positive Controls: IF : MCF-7 cells,
Species Specificity: Human, rat, mouse	

Background Information

DVL1 is one of three DVL homologous proteins (DVL1-3) widely expressed in embryonic development and in the adult central nervous system. Dishevelled proteins are a necessary component of the Wnt and planar cell polarity developmental signaling pathways. Overexpression of DVL1 has been linked to prostate and breast cancers through the Wnt signaling pathway. There are two isoforms of DVL1: 75 kDa and 73 kDa.

Storage

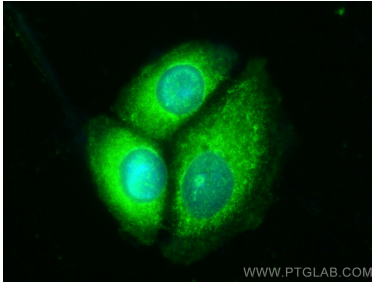
Storage:
Store at -20°C. Avoid exposure to light. Stable for one year after shipment.
Storage Buffer:
PBS with 50% Glycerol, 0.05% Proclin300, 0.5% BSA, pH 7.3.
Aliquoting is unnecessary for -20°C storage

***** 20ul sizes contain 0.1% BSA**

For technical support and original validation data for this product please contact:
T: 1 (888) 4PTGLAB (1-888-478-4522) (toll free in USA), or 1(312) 455-8498 (outside USA) E: proteintech@ptglab.com W: ptglab.com

This product is exclusively available under Proteintech Group brand and is not available to purchase from any other manufacturer.

Selected Validation Data



Immunofluorescent analysis of (-20°C Methanol) fixed MCF-7 cells using CoraLite® Plus 488 DVL1 antibody (CL488-67672, Clone: 1A2A5) at dilution of 1:200.