

For Research Use Only

# CoraLite® Plus 488-conjugated EIF2AK1 Monoclonal antibody

Catalog Number: CL488-67674



## Basic Information

Catalog Number:

CL488-67674

Size:

100ul, Concentration: 1000 ug/ml by  
Nanodrop;

Source:

Mouse

Isotype:

IgG1

Immunogen Catalog Number:

AG16970

GenBank Accession Number:

BC006524

GeneID (NCBI):

27102

UNIPROT ID:

Q9BQI3

Full Name:

eukaryotic translation initiation  
factor 2-alpha kinase 1

Calculated MW:

630 aa, 71 kDa

Observed MW:

71 kDa

Purification Method:

Protein G purification

CloneNo.:

2H1F3

Recommended Dilutions:

IF/ICC 1:50-1:500

Excitation/Emission maxima  
wavelengths:

493 nm / 522 nm

## Applications

Tested Applications:

IF/ICC, FC (Intra)

Species Specificity:

human

Positive Controls:

IF/ICC : HeLa cells,

## Background Information

Eukaryotic initiation factor 2a (eIF2a), which is a critical component in the formation of the translation initiation ternary complex (eIF2a/GTP/methionyl transfer RNA), plays a key role in the ER stress response. EIF2AK1, which is activated by heme deficiency and other stimuli, is a major kinase that phosphorylates EIF2-alpha. Phosphorylation of the alpha subunit of EIF2 downregulates protein synthesis in response to various stress conditions. EIF2AK1 has some isoforms with 630aa, 577aa and 422aa.

## Storage

Storage:

Store at -20°C. Avoid exposure to light. Stable for one year after shipment.

Storage Buffer:

PBS with 50% Glycerol, 0.05% Proclin300, 0.5% BSA, pH 7.3.

Aliquoting is unnecessary for -20°C storage

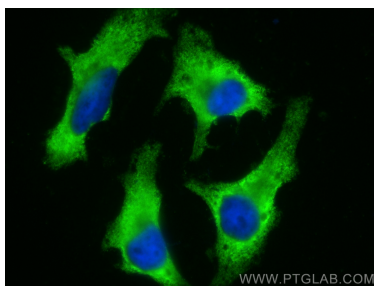
For technical support and original validation data for this product please contact:

T: 1 (888) 4PTGLAB (1-888-478-4522) (toll free  
in USA), or 1(312) 455-8498 (outside USA)

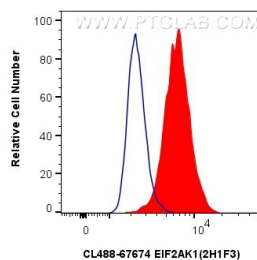
E: [proteintech@ptglab.com](mailto:proteintech@ptglab.com)  
W: [ptglab.com](http://ptglab.com)

This product is exclusively available under Proteintech Group brand and is not available to purchase from any other manufacturer.

## Selected Validation Data



Immunofluorescent analysis of (-20°C Methanol) fixed HeLa cells using Coralite® Plus 488 EIF2AK1 antibody (CL488-67674, Clone: 2H1F3 ) at dilution of 1:200.



1x10<sup>6</sup> HepG2 cells were intracellularly stained with 0.4 ug Coralite® Plus 488-conjugated EIF2AK1 Monoclonal antibody (CL488-67674, Clone:2H1F3)(red), or 0.4 ug Coralite® Plus 488 Mouse IgG1 Isotype Control (1F8D3) (CL488-66360-1, Clone: 1F8D3) (blue). Cells were fixed with 4% PFA and permeabilized with Flow Cytometry Perm Buffer (PF00011-C).