

For Research Use Only

CoraLite® Plus 488-conjugated ERP29 Monoclonal antibody

Catalog Number:CL488-67675



Basic Information

| | | |
|--|---|---|
| Catalog Number: CL488-67675 | GenBank Accession Number: BC101495 | Purification Method: Protein A purification |
| Size: 100ul , Concentration: 1000 ug/ml by Nanodrop; | GeneID (NCBI): 10961 | CloneNo.: 1H8B2 |
| Source: Mouse | UNIPROT ID: P30040 | Recommended Dilutions: IF-P 1:50-1:500 |
| Isotype: IgG2a | Full Name: endoplasmic reticulum protein 29 | Excitation/Emission maxima wavelengths: 493 nm / 522 nm |
| Immunogen Catalog Number: AG30262 | Calculated MW: 261 aa, 29 kDa | |
| | Observed MW: 29 kDa | |

Applications

| | |
|--|--|
| Tested Applications: IF-P | Positive Controls: IF-P : human kidney tissue, |
| Species Specificity: Human, Mouse, Rat | |

Background Information

Endoplasmic reticulum resident protein 29 (ERP29) is a 29-kDa endoplasmic reticulum (ER) luminal protein. Structurally ERp29 is related to protein disulfide isomerases (PDI). However, it lacks the thioredoxin motif, suggesting that this protein does not function as a disulfide isomerase (PMID: 15500441). ERP29 plays an important role in the processing of secretory proteins within the (ER), possibly by participating in the folding of proteins in the ER. The secretion of thyroglobulin (TG) was found to be strongly regulated by ERP29 (PMID: 16380091).

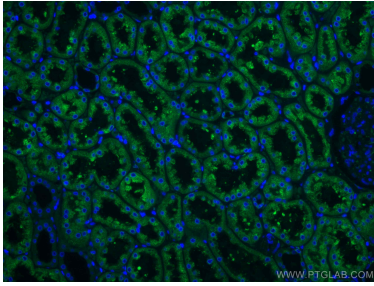
Storage

Storage:
Store at -20°C. Avoid exposure to light. Stable for one year after shipment.
Storage Buffer:
PBS with 50% Glycerol, 0.05% Proclin300, 0.5% BSA, pH 7.3.
Aliquoting is unnecessary for -20°C storage

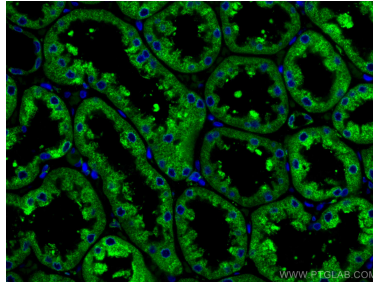
For technical support and original validation data for this product please contact:
T: 1 (888) 4PTGLAB (1-888-478-4522) (toll free in USA), or 1(312) 455-8498 (outside USA)
E: proteintech@ptglab.com
W: ptglab.com

This product is exclusively available under Proteintech Group brand and is not available to purchase from any other manufacturer.

Selected Validation Data



Immunofluorescent analysis of (4% PFA) fixed human kidney tissue using CoraLite® Plus 488 ERP29 antibody (CL488-67675, Clone: 1H8B2) at dilution of 1:200.



Immunofluorescent analysis of (4% PFA) fixed human kidney tissue using CoraLite® Plus 488 ERP29 antibody (CL488-67675, Clone: 1H8B2) at dilution of 1:200.