

For Research Use Only

# CoraLite® Plus 488-conjugated PSMA6 Monoclonal antibody

Catalog Number: CL488-67695



## Basic Information

### Catalog Number:

CL488-67695

### Size:

100ul , Concentration: 1000 ug/ml by Nanodrop;

### Source:

Mouse

### Isotype:

IgG2b

### Immunogen Catalog Number:

AG21761

### GenBank Accession Number:

BC023659

### GeneID (NCBI):

5687

### UNIPROT ID:

P60900

### Full Name:

proteasome (prosome, macropain) subunit, alpha type, 6

### Calculated MW:

246 aa, 27 kDa

### Observed MW:

30 kDa

### Purification Method:

Protein A purification

### CloneNo.:

1D4B2

### Recommended Dilutions:

IF-P 1:50-1:500

IF/ICC 1:50-1:500

### Excitation/Emission maxima wavelengths:

493 nm / 522 nm

## Applications

### Tested Applications:

IF/ICC, IF-P

### Species Specificity:

human, mouse, rat

### Positive Controls:

IF-P : human lung cancer tissue,

IF/ICC : U2OS cells,

## Background Information

PSMA6(Proteasome subunit alpha type-6) is also named as PROS27 and belongs to the peptidase T1A family. The proteasome is a multicatalytic proteinase complex which is characterized by its ability to cleave peptides with Arg, Phe, Tyr, Leu, and Glu adjacent to the leaving group at neutral or slightly basic pH. It also has an ATP-dependent proteolytic activity.

## Storage

### Storage:

Store at -20°C. Avoid exposure to light. Stable for one year after shipment.

### Storage Buffer:

PBS with 50% Glycerol, 0.05% Proclin300, 0.5% BSA, pH 7.3.

Aliquoting is unnecessary for -20°C storage

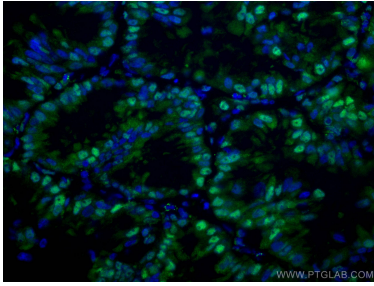
For technical support and original validation data for this product please contact:

T: 1 (888) 4PTGLAB (1-888-478-4522) (toll free in USA), or 1(312) 455-8498 (outside USA)

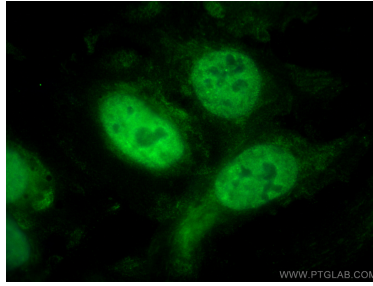
E: [proteintech@ptglab.com](mailto:proteintech@ptglab.com)  
W: [ptglab.com](http://ptglab.com)

This product is exclusively available under Proteintech Group brand and is not available to purchase from any other manufacturer.

## Selected Validation Data



Immunofluorescent analysis of (4% PFA) fixed human lung cancer tissue using CoraLite® Plus 488 PSMA6 antibody (CL488-67695, Clone: 1D4B2 ) at dilution of 1:200.



Immunofluorescent analysis of (4% PFA) fixed U2OS cells using CoraLite® Plus 488 PSMA6 antibody (CL488-67695, Clone: 1D4B2 ) at dilution of 1:200.