

For Research Use Only

CoraLite® Plus 488-conjugated YWHAZ Monoclonal antibody



Catalog Number: **CL488-67698**

Basic Information

Catalog Number: CL488-67698	GenBank Accession Number: BC003623	Purification Method: Caprylic acid/ammonium sulfate precipitation
Size: 100ul , Concentration: 1000 µg/ml by Nanodrop;	GeneID (NCBI): 7534	CloneNo.: 3G12B10
Source: Mouse	UNIPROT ID: P63104	Recommended Dilutions: IF 1:50-1:500
Isotype: IgM	Full Name: tyrosine 3-monooxygenase/tryptophan 5-monooxygenase activation protein, zeta polypeptide	Excitation/Emission maxima wavelengths: 493 nm / 522 nm
Immunogen Catalog Number: AG6667	Calculated MW: 28 kDa	
	Observed MW: 28-30 kDa	

Applications

Tested Applications: IF	Positive Controls: IF : MCF-7 cells,
Species Specificity: Human, mouse, rat	

Background Information

YWHAZ (also known as 14-3-3 zeta) is a member of 14-3-3 proteins which were the first phosphoserine/phosphothreonine-binding proteins to be discovered. 14-3-3 family members interact with a wide spectrum of proteins and possess diverse functions. Mammals express seven distinct 14-3-3 isoforms (gamma, epsilon, beta, zeta, sigma, theta, tau) that form multiple homo- and hetero- dimmers. 14-3-3 proteins display the highest expression levels in the brain, and have been implicated in several neurodegenerative diseases, including Alzheimer's disease and amyotrophic lateral sclerosis.

Storage

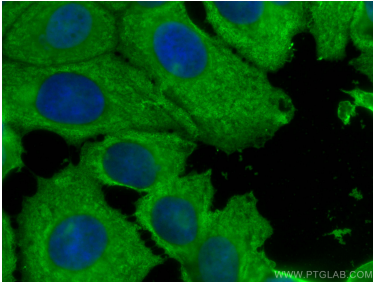
Storage:
Store at -20°C. Avoid exposure to light. Stable for one year after shipment.
Storage Buffer:
PBS with 50% Glycerol, 0.05% Proclin300, 0.5% BSA, pH 7.3.
Aliquoting is unnecessary for -20°C storage

*** 20ul sizes contain 0.1% BSA

For technical support and original validation data for this product please contact:
T: 1 (888) 4PTGLAB (1-888-478-4522) (toll free in USA), or 1(312) 455-8498 (outside USA)
E: proteintech@ptglab.com
W: ptglab.com

This product is exclusively available under Proteintech Group brand and is not available to purchase from any other manufacturer.

Selected Validation Data



Immunofluorescent analysis of (-20°C Methanol) fixed MCF-7 cells using CoraLite® Plus 488 YWHAZ antibody (CL488-67698, Clone: 3G12B10) at dilution of 1:200.